

P E R B O R U P

Since 1962

EUROPE 14K



CONTACT

Per Borup Design
+45 39661090
info@perborupdesign.dk

Beth Lillegård
+45 22275401
beth@changeling.dk

P.B.O.

Fall 2024

Display material

Order platforms, backgrounds and certificates at www.pboretail.com



A4



A5

Display elements

Long low block for long ear jewellery and pendants.
 High and low blocks for rings
 Medium block for earrings.
 Small with T-bar, high and low.



K1

K2

K3

K4



Ribbon for Changeling rings and stacking



K5

K6



Padded block



Tray for Changeling gemstones with high edges



Picture frame with postcard



Small tray for rings

Jewellery boxes



Rings



Ear studs



Pendant



Chaneling rings



Bangle



Bracelet

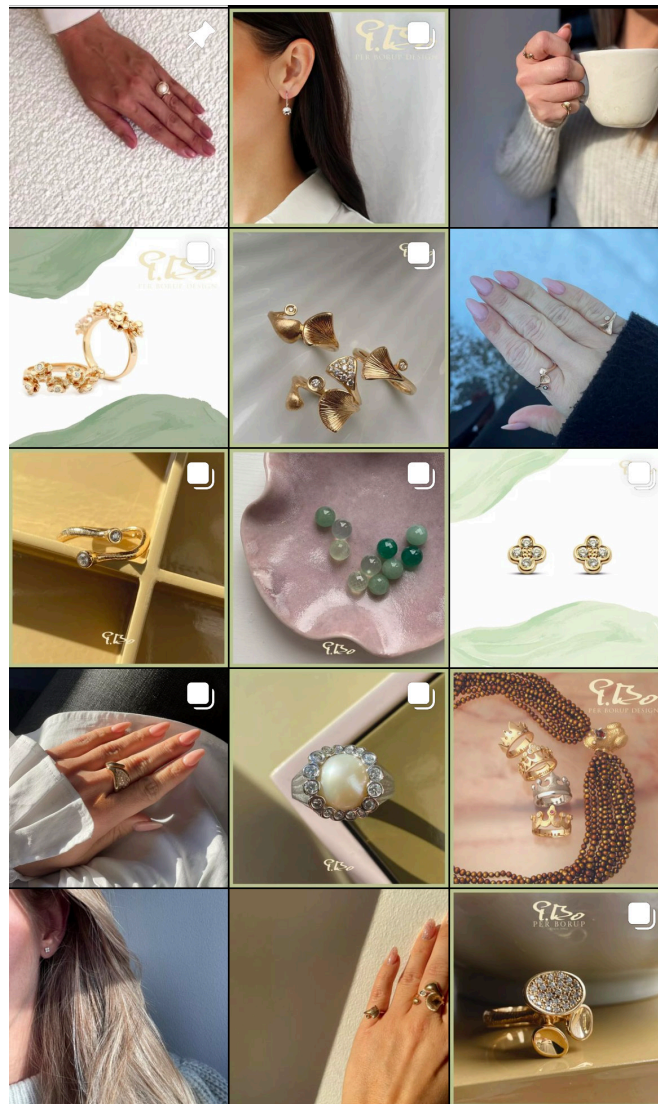


Pouch for Chaneling gemstones



Certificate of authenticity

S O C I A L M E D I A



Follow us on Instagram and stay updated:

@perborupdesign

Our posts and stories are available in our Dropbox,
so you can use them on your social media.



Should we post for you directly on your Instagram
and Facebook?

Then connect via sendible here:

(and call Julie at +45 39661090 or +45 25621238 if you have questions)

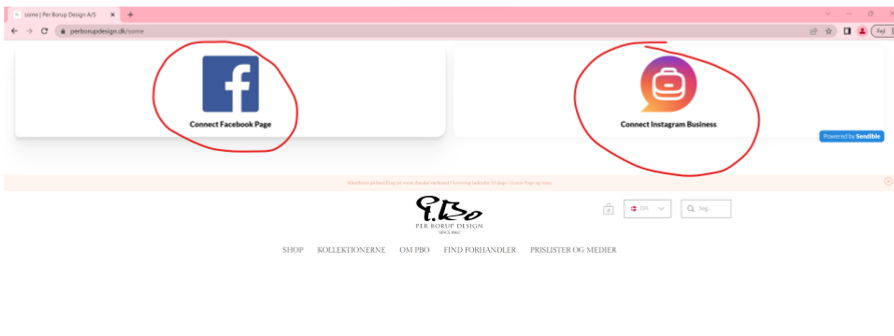


A GUIDE TO FACEBOOK AND INSTAGRAM CONNECTING TO SENDIBLE AND PER BORUP DESIGN.

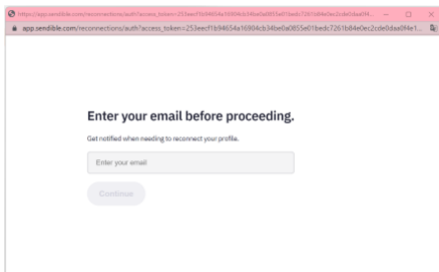
Per Borup Design would very much like to help you with social media. In order to be able to post on your Facebook and Instagram, you must give us permission to do so through Sendible, which is the software we use to plan our content. Through this, we ensure that your customers continuously hear from you and see the selection of jewelry from Per Borup Design.

To give us access to post on your social media, you must click on the links on <https://pboretail.com/pages/social-media>

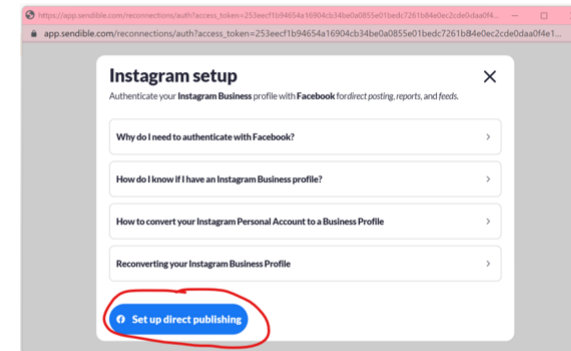
If you want to connect to both your Facebook and Instagram, you need to do it twice, by clicking on the two links.



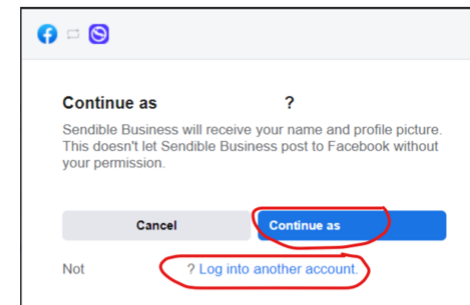
You will then be asked to enter your email. You must choose the email you want Sendible to contact you on, and not necessarily the one you are registered on Facebook with.



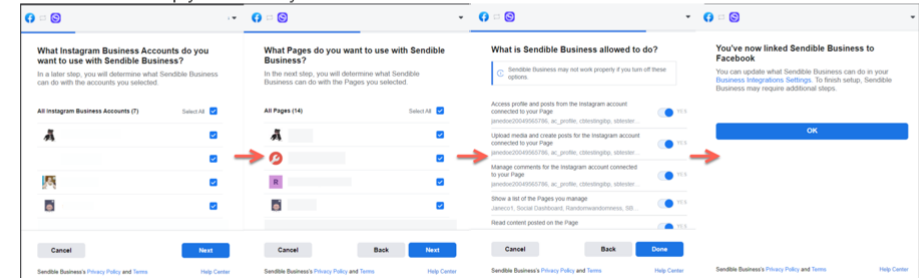
A window will now appear which can be a bit confusing. There are answers to some of the questions you might have, but you really just have to click on 'Set up direct publishing'.



You must now log in to the Facebook account that is the administrator for your business page.



After that, you must choose which business page Per Borup Design must be able to post on, and not least, permissions are given. Unfortunately, the system requires us to get permission for the entire range to work. But we will only post notices. After this, all communication with your customers is yours, and we will not reply or like for you.



Changeling gemstones

Additional stones Ref.nr. 9000453 EUR 120,-

							
Opal Blue Smooth	Opal Blue Faceted	Chalcedony Light blue Smooth	Chalcedony Light blue Faceted	Chalcedony Sea blue Smooth	Chalcedony Sea blue Faceted	Turquoise Turquoise Smooth	Snow quartz White Smooth
							
Amethyst Purple Smooth	Amethyst Purple Faceted	Rose quartz Light pink Smooth	Rose quartz Light pink Faceted	Rose quartz Light pink Rosecut	Opal Pink Smooth	Opal Pink Faceted	Pyrite Metallic gold Faceted
							
Agate Green Smooth	Agate Green Faceted	Agate Green Rosecut	Aventurine Green Smooth	Aventurine Green Faceted	Prehnite Light green Smooth	Prehnite Light green Faceted	Prasiolite Green Faceted
							
Labradorite Grey / Brown Smooth	Labradorite Grey / Brown Faceted	Smokey quartz Brown Smooth	Smokey quartz Brown Faceted	Smokey quartz Brown Rosecut	Spinel Black Smooth	Spinel Black Faceted	Spinel Black Rosecut
							
Moonstone Nude Smooth	Moonstone Nude Faceted	Aventurine Yellow Smooth	Aventurine Yellow Rosecut	Carnelian Orange Smooth	Carnelian Orange Faceted	Rutile quartz Golden Smooth	Rutile quartz Golden Faceted
							
Moonstone Grey Smooth	Moonstone Grey Faceted	Moonstone White Smooth	Moonstone White Faceted	Hematite Dark grey Smooth	Hematite Dark grey Faceted	Rock Crystal Transperant Smooth	Rock Crystal Transperant Faceted
							
Freshwater pearl White Smooth							

When buying a silver piece of jewellery, one gemstone is included.
 When buying a gold piece of jewellery; three gemstones are included.
 When buying Una Changeling earrings or Sonar cufflinks; four gemstones are included.

The colors of the gemstones may vary depending on the images.



Tahitian pearl not included.

If this is desired, the price is:
 Ref.nr. 701149: EUR. 320,-

Europe

P E R B O R U P

Drop pendants

Stone types and colours



Moonstone - Peach



Moonstone - White



Golden Rutile Quartz



Black spinel



Moonstone - Grey



Moonstone - Grey - Carved



Pink opal



Green agate



Rose-violet barok pearls



White barok pearls



White round pearls



Labradorite

The 3 different tops



1056V

Small eyelet.

Fits only Party earrings
Violina, Fiona, Philippa and Twigs

14k yellow gold: 52603 - EUR 660,-
14k white gold: 52701 - EUR 700,-
Price does not apply to Tahitian pearls.



1121V

Big eyelet.

Fits everything, and has a curl.
There's no curl on the pearls.

14k yellow gold: 52403 - EUR 610,-
14k white gold: 52501 - EUR 640,-
Price does not apply to Tahitian pearls.



1154V

Big eyelet.

Fits everything and is simple.

14k yellow gold: 52203 - EUR 550,-
14k white gold: 52201 - EUR 570,-
Price does not apply to Tahitian pearls.



Tahitian pearls - 1121VT

14k yellow gold: 54503 - EUR 1.170,-
14k white gold: 54701 - EUR 1.210,-

Prices are for 1 pair. 1 piece is half the price.

Europe



1055Ø
0,00 ct.
Yellow gold 1.660
White gold 1.820



1055ØX
0,18 ct.
Yellow gold 3.350
White gold 3.500



1055ØY
1,08 ct.
Yellow gold 9.440
White gold 9.600



1055ØXM
0,18 ct.
Yellow gold 3.920
White gold 4.080



1081Ø
0,00 ct.
Yellow gold 1.770
White gold 1.930



1060ØX
0,06 ct.
Yellow gold 2.230
White gold 2.410



1153ØX
0,02 ct.
Rødguld 6.350
Hvidguld 6.825



1085Ø
0,02 ct.
Yellow gold 2.220
White gold 2.420

Please note that the overview here does not reflect our entire range in bracelets.
See the product catalog at www.perborupdesign.dk

PERBORUP

Bracelets

	309A		
	0,01 ct.		
	Yellow gold	9.520	
	White gold	10.670	
	Two-coloured	10.100	

	340A		
	0,01 ct.		
	Yellow gold	7.450	
	White gold	8.270	
	Two-coloured	7.860	

	448A		
	0,01 ct.		
	Yellow gold	6.750	
	White gold	7.440	
	Two-coloured	7.100	

	863A		
	0,01 ct.		
	Yellow gold	6.710	
	White gold	7.390	

	330A		
	0,01 ct.		
	Yellow gold	11.050	
	White gold	12.450	
	Two-coloured	11.750	

	797A		
	0,01 ct.		
	Yellow gold	6.370	
	White gold	7.080	
	Two-coloured	6.730	

	799AY		
	1,19 ct.		
	Yellow gold	15.510	
	White gold	16.570	

	864A		
	0,01 ct.		
	Yellow gold	5.370	
	White gold	5.880	

	376A		
	0,01 ct.		
	Yellow gold	4.630	
	White gold	5.150	

	377A		
	0,01 ct.		
	Yellow gold	6.070	
	White gold	6.820	

	1133C		
	0,01 ct.		
	Yellow gold	15.120	
	White gold	16.840	
	Two-coloured	15.980	



425L
0,09 ct.
Yellow gold 5.170
White gold 5.700



430L
0,00 ct.
Yellow gold 1.130
White gold 1.260



867L
0,00 ct.
Yellow gold 820
White gold 890



431L
0,00 ct.
Yellow gold 1.130
White gold 1.260



849L
0,00 ct.
Yellow gold 1.300
White gold 1.440



753L
0,00 ct.
Yellow gold 1.300
White gold 1.440



405LX
0,06 ct.
Yellow gold 2.660
White gold 2.950



459L
0,02 ct.
Yellow gold 5.120
White gold 5.730



498L
0,00 ct.
Yellow gold 2.660
White gold 2.950



622L
0,00 ct.
Yellow gold 3.760
White gold 4.220



227L
0,00 ct.
Yellow gold 1.390
White gold 1.530



516L 11 mm
0,00 ct.
Yellow gold 1.090
White gold 1.190



405L
0,00 ct.
Yellow gold 2.290
White gold 2.580



536L
0,00 ct.
Yellow gold 2.260
White gold 2.540



392L
0,00 ct.
Yellow gold 2.190
White gold 2.440



225L
0,00 ct.
Yellow gold 1.560
White gold 1.740



406L
0,00 ct.
Yellow gold 1.160
White gold 1.280



665LY
0,61 ct.
Yellow gold 6.140
White gold 6.420



1131L
0,00 ct.
Yellow gold 720
White gold 800



1132L
0,00 ct.
Yellow gold 1.230
White gold 1.380



628L
0,00 ct.
Yellow gold 1.160
White gold 1.300



227LY
0,43 ct.
Yellow gold 4.540
White gold 4.690



522L
0,00 ct.
Yellow gold 2.910
White gold 3.220



504L
0,11 ct.
Yellow gold 5.380
White gold 5.980



279L 11 mm
0,00 ct.
Yellow gold 1.270
White gold 1.400



279LX 11 mm
0,02 ct.
Yellow gold 1.450
White gold 1.580



280L 14 mm
0,00 ct.
Yellow gold 2.000
White gold 2.220



280LX 14 mm
0,04 ct.
Yellow gold 2.260
White gold 2.470

Please note that the overview here does not reflect our entire range of clasps.
See the product catalog at www.perborupdesign.dk

PERBORUP

Clasps



281L 18 mm
0,00 ct.
Yellow gold 3.290
White gold 3.680



281LX 18 mm
0,06 ct.
Yellow gold 3.620
White gold 4.010



342L 11 mm
0,03 ct.
Yellow gold 1.640
White gold 1.790



343L 14 mm
0,05 ct.
Yellow gold 2.640
White gold 2.910



547LX
0,06 ct.
Yellow gold 3.400
White gold 3.770



240L
0,08 ct.
Yellow gold 3.840
White gold 4.200



719L
0,03 ct.
Yellow gold 2.130
White gold 2.380



912LX
0,09 ct.
Yellow gold 2.470
White gold 2.670



White freshwater pearl necklace
CM
40 135
42 135
45 135
50 135



White freshwater pearl necklace
CM
80 270
100 270



Dupper stk. ref. 70108
Stk.
2 8
10 42



326R
0,08 ct.
Yellow gold 3.250
White gold 3.600



326RX
0,23 ct.
Yellow gold 4.080
White gold 4.430



48R
0,25 ct.
Yellow gold 4.870
White gold 5.290



526R
0 ct.
Yellow gold 2.700
White gold 3.060



793R
0 ct.
Yellow gold 2.140
White gold 2.410



793RY
0,18 ct.
Yellow gold 3.230
White gold 3.490



771RX
0,22 ct.
Yellow gold 4.800
White gold 5.240



771RY
0,44 ct.
Yellow gold 6.180
White gold 6.620



474RX
0,12 ct.
Yellow gold 2.650
White gold 2.900



548R
0 ct.
Yellow gold 3.650
White gold 4.150



548RX
0,09 ct.
Yellow gold 4.150
White gold 4.650



548RY
0,45 ct.
Yellow gold 6.420
White gold 6.920



749R
0,08 ct.
Yellow gold 2.900
White gold 3.220



638R
0,56 ct.
Yellow gold 9.130
White gold 9.890



932RX
0,15 ct.
Yellow gold 1.600
White gold 1.690



674R
0,10 ct.
Yellow gold 3.470
White gold 3.810



933R
0 ct.
Yellow gold 1.340
White gold 1.510



803R
0 ct.
Yellow gold 2.440
White gold 2.780



758RX
0,09 ct.
Yellow gold 2.750
White gold 3.010



365R
0,51 ct.
Yellow gold 7.110
White gold 7.590



991R
0,02 ct.
Yellow gold 2.140
White gold 2.350



993R
0,02 ct.
Yellow gold 2.190
White gold 2.400



993RX
0,18 ct.
Yellow gold 3.550
White gold 3.770



847R
0,02 ct.
Yellow gold 1.540
White gold 1.730



137R
0,26 ct.
Yellow gold 4.080
White gold 4.350



1012R
0 ct.
Yellow gold 2.090
White gold 2.360



738R
0,00 ct.
Yellow gold 1.200
White gold 1.330



499R
0,12 ct.
Yellow gold 3.640
White gold 3.990



1166R
0,00 ct.
Yellow gold 1.540
White gold 1.740



1167R
0,00 ct.
Yellow gold 3.080
White gold 3.510



658R
0,00 ct.
Yellow gold 2.270
White gold 2.580



672R
0,06 ct.
Yellow gold 2.320
White gold 2.550



893RD
0,00 ct.
Yellow gold 2.570
White gold 2.920



890R
0,00 ct.
Yellow gold 2.270
White gold 2.580



1010R
0 ct.
Yellow gold 1.400
White gold 1.550



1010RX
0,06 ct.
Yellow gold 1.670
White gold 1.810



1043RYY
0,34 ct.
Yellow gold 3.570
White gold 3.750



1015VX
0,03 ct.
Yellow gold 840
White gold 900



139R
0,17 ct.
Yellow gold 5.830
White gold 6.340



1150RX
0,08 ct.
Yellow gold 3.650
White gold 3.930



1148CSX
0,01 ct.
Yellow gold 730
White gold 770



1149AX
0,01 ct.
Yellow gold 1.060
White gold 1.110



1148CX45
0,01 ct.
Yellow gold 1.510
White gold 1.550



1148CX90
0,01 ct.
Yellow gold 2.300
White gold 2.340



750Ø Kampala
0,04 ct.
Yellow gold 1.430
White gold 1.530



429ØX
0,02 ct.
Yellow gold 1.610
White gold 1.750



523Ø
0,00 ct.
Yellow gold 950
White gold 1.020



503Ø
0,02 ct.
Yellow gold 1.180
White gold 1.260



549Ø Sweetheart
0,00 ct.
Yellow gold 1.550
White gold 1.720



503ØY
0,68 ct.
Yellow gold 5.910
White gold 6.060



659Ø Amaryllis
0,00 ct.
Yellow gold 1.250
White gold 1.370



819Ø
0,00 ct.
Yellow gold 1.030
White gold 1.110



968ØX Star
0,04 ct.
Yellow gold 1.030
White gold 1.080



971Ø
0,00 ct.
Yellow gold 830
White gold 880



927ØX Smooth
0,10 ct.
Yellow gold 1.250
White gold 1.280



936ØX
0,12 ct.
Yellow gold 1.610
White gold 1.660



1152ØX The Lucky Ones
0,08 ct.
Yellow gold 1.340
White gold 1.360



525Ø
0,00 ct.
Yellow gold 1.230
White gold 1.340



1046ØYY Diamond Dots
0,36 ct.
Yellow gold 4.450
White gold 4.580



861Ø
0,02 ct.
Yellow gold 900
White gold 940

Duke



113R
0,00 ct.
Yellow gold 3.470
White gold 3.930



127R
0,26 ct.
Yellow gold 3.950
White gold 4.220



1114R
0,00 ct.
Yellow gold 1.480
White gold 1.650



1115N
0,00 ct.
Yellow gold 1.370
White gold 1.510



1116M
0,00 ct.
Yellow gold 3.480
White gold 3.960

Sandell



108R
0,00 ct.
Yellow gold 4.520
White gold 5.160



1112N
0,00 ct.
Yellow gold 900
White gold 980



1113M
0,00 ct.
Yellow gold 3.550
White gold 4.040



868R Fairytale
0,00 ct.
Yellow gold 2.060
White gold 2.260



869R Clover
0,00 ct.
Yellow gold 2.230
White gold 2.460



870R Hearts
0,00 ct.
Yellow gold 1.760
White gold 1.910



871R Dream
0,00 ct.
Yellow gold 1.980
White gold 2.170



877R Wave
0,00 ct.
Yellow gold 2.310
White gold 2.540



877RX Wave
0,22 ct.
Yellow gold 3.900
White gold 4.140



983R Happy Flower
0,00 ct.
Yellow gold 2.780
White gold 3.100



983RY Happy Flower
0,12 ct.
Yellow gold 3.400
White gold 3.730



983RSX Happy Flower
0,02 ct.
Silver 620



980R Daphne
0,00 ct.
Yellow gold 2.900
White gold 3.250



878R Look
0,00 ct.
Yellow gold 2.260
White gold 2.490



997R Daphne
0,00 ct.
Yellow gold 1.850
White gold 2.040



878RX Look
0,30 ct.
Yellow gold 4.110
White gold 4.340



904R Raspberry
0,00 ct.
Yellow gold 2.570
White gold 2.850



904RY Raspberry
0,44 ct.
Yellow gold 6.460
White gold 6.740



1017R Stream
0,00 ct.
Yellow gold 2.250
White gold 2.480



877RXS Wave
0,22 ct.
Yellow gold 3.270
White gold 3.510



969R Open Your Heart
0,00 ct.
Yellow gold 1.850
White gold 2.040



969RSX Open Your Heart
0,02 ct.
Silver 650



969RS Open Your Heart
0,00 ct.
Silver 550



1026R Una
0,00 ct.
Yellow gold 2.550
White gold 2.840



1026RX Una
0,20 ct.
Yellow gold 3.760
White gold 4.050



911RX Twigs
0,12 ct.
Yellow gold 3.400
White gold 3.650



917R Smooth
0,00 ct.
Yellow gold 2.680
White gold 2.980



911RY Twigs
0,46 ct.
Yellow gold 5.500
White gold 5.760



911RXM Twigs
0,12 ct.
Yellow gold 3.580
White gold 3.840



911R Twigs
0,00 ct.
Yellow gold 2.430
White gold 2.690



911RS Twigs
0,00 ct.
Silver 530



911RSX Twigs
0,03 ct.
Silver 800



1034R Twigs Cocktail
0,00 ct.
Yellow gold 1.830
White gold 2.000



1034RX Twigs Cocktail
0,06 ct.
Yellow gold 2.210
White gold 2.370



916R Rosie
0,00 ct.
Yellow gold 2.780
White gold 3.100



916RX Rosie
0,28 ct.
Yellow gold 4.660
White gold 4.970



919R Spin
0,00 ct.
Yellow gold 1.740
White gold 1.880



922R Violina
0,00 ct.
Yellow gold 2.710
White gold 3.000



922RX Violina
0,04 ct.
Yellow gold 3.060
White gold 3.360



922RY Violina
0,59 ct.
Yellow gold 7.160
White gold 7.460



1000R Ella
0,00 ct.
Yellow gold 2.130
White gold 2.360



1050RY Fiona
0,32 ct.
Yellow gold 5.440
White gold 5.790



1050R Fiona
0,00 ct.
Yellow gold 2.900
White gold 3.250



1072RS Tina
0,00 ct.
Silver 360



1077RX Philippa
0,06 ct.
Yellow gold 2.820
White gold 3.070



1088R Violina
0,00 ct.
Yellow gold 2.570
White gold 2.850



1117RX Ophelia
0,06 ct.
Yellow gold 2.110
White gold 2.290



1145RX Kaya
0,01 ct.
Yellow gold 2.620
White gold 2.890



Long chain
100 cm No lock
Oxy silver 100
45 cm With lock
Oxy silver 75



1051VX Fiona
0,04 ct.
Yellow gold 1.830
White gold 1.980



1051V Fiona
0,00 ct.
Yellow gold 1.580
White gold 1.720



880V Dream
0,00 ct.
Yellow gold 1.150
White gold 1.230



879V Fairytale
0,00 ct.
Yellow gold 1.330
White gold 1.430



924V Raspberry
0,00 ct.
Yellow gold 1.300
White gold 1.410



920VX Twigs
0,07 ct.
Yellow gold 1.790
White gold 1.890



920V Twigs
0,00 ct.
Yellow gold 1.280
White gold 1.380



1024V Una
0,00 ct.
Yellow gold 1.020
White gold 1.070



994V Open Your Heart
0,00 ct.
Yellow gold 1.310
White gold 1.420



881V Heart
0,00 ct.
Yellow gold 1.280
White gold 1.380



923VX Violina
0,01 ct.
Yellow gold 1.540
White gold 1.670



923V Violina
0,00 ct.
Yellow gold 1.450
White gold 1.580



1002V Happy Flower
0,00 ct.
Yellow gold 1.580
White gold 1.720



1002VX Happy Flower
0,06 ct.
Yellow gold 1.950
White gold 2.100



998V Ella
0,00 ct.
Yellow gold 1.300
White gold 1.410



1118VX Ophelia
0,03 ct.
Yellow gold 1.540
White gold 1.660



1142V Daphne
0,00 ct.
Yellow gold 1.200
White gold 1.290



1019Ø
0,02 ct.
Yellow gold 2.720
White gold 2.930



900AL
0,00 ct.
Yellow gold 1.610
White gold 1.750



900ALX
0,04 ct.
Yellow gold 1.870
White gold 2.010



901AL
0,00 ct.
Yellow gold 1.610
White gold 1.750



901ALX
0,04 ct.
Yellow gold 1.870
White gold 2.010



CH1
Onyx / 18k goldchain
Yellow gold 1.876



CH2
Oxidized silver chain
Silver 190



CH3
Silver chains
Silver 190



CH4
Faceted Onyx chain
Silver 190



CH5
Hematit / 18k gold chain
Yellow gold 1.876



CH6
Silver / 18k gold chain
Yellow gold 1.876



CH7
Silver / 18k gold chain
Yellow gold 1.876



CH8
Oxidized silver chain
Silver 190



CH9
Oxidized silver chain
Silver 190



977R
0,00 ct.
Yellow gold 1.120
White gold 1.260



977RX
0,10 ct.
Yellow gold 2.000
White gold 2.150



1141R
0,00 ct.
Yellow gold 2.360
White gold 2.670



1141RX
0,13 ct.
Yellow gold 3.070
White gold 3.390



979R
0,00 ct.
Yellow gold 3.470
White gold 3.960



978R
0,00 ct.
Yellow gold 2.960
White gold 3.390



979RX
0,12 ct.
Yellow gold 4.610
White gold 5.150



979RY
0,72 ct.
Yellow gold 8.030
White gold 8.600



981ØS
0,00 ct.
Silver 610



982Ø
0,00 ct.
Yellow gold 720
White gold 760



979RS
0,00 ct.
Silver 610



980R
0,00 ct.
Yellow gold 2.900
White gold 3.250



997R
0,00 ct.
Yellow gold 1.850
White gold 2.040



1102A
0,00 ct.
Yellow gold 2.870
White gold 3.160



1103Ø
0,00 ct.
Yellow gold 1.160
White gold 1.250



1033Ø
0,00 ct.
Yellow gold 2.720
White gold 3.040



1142V

0,00 ct.

Yellow gold 1.200

White gold 1.290



985R
0,00 ct.
Yellow gold 1.070
White gold 1.200



986R
0,00 ct.
Yellow gold 1.450
White gold 1.630



1001RX
0,10 ct.
Yellow gold 1.760
White gold 1.850



999R2
0,00 ct.
Yellow gold 550
White gold 610



999R1
0,00 ct.
Yellow gold 550
White gold 610



987Ø
0,00 ct.
Yellow gold 760
White gold 800



988Ø
0,04 ct.
Yellow gold 1.530
White gold 1.670



989A
0,04 ct.
Yellow gold 4.740
White gold 5.280



998V
0,00 ct.
Yellow gold 1.300
White gold 1.410



1000R
0,00 ct.
Yellow gold 2.130
White gold 2.360



1059Ø
0,00 ct.
Yellow gold 2.290
White gold 2.480



1060ØX Party
0,06 ct.
Yellow gold 2.230
White gold 2.410



1052ØX
0,04 ct.
Yellow gold 1.450
White gold 1.550



1058V
0,00 ct.
Yellow gold 1.220
White gold 1.370



1058VX
0,06 ct.
Yellow gold 1.770
White gold 1.940



1057RX
0,02 ct.
Yellow gold 1.160
White gold 1.290



1047RY
0,23 ct.
Yellow gold 4.210
White gold 4.560



1047R
0,00 ct.
Yellow gold 2.540
White gold 2.890



1048R
0,00 ct.
Yellow gold 1.990
White gold 2.260



1048RX
0,15 ct.
Yellow gold 2.740
White gold 3.010



1049R
0,00 ct.
Yellow gold 2.190
White gold 2.480



1049RX
0,10 ct.
Yellow gold 2.930
White gold 3.220



1051V
0,00 ct.
Yellow gold 1.580
White gold 1.720



1051VX
0,04 ct.
Yellow gold 1.830
White gold 1.980



1050R
0,00 ct.
Yellow gold 2.900
White gold 3.250



1050RY
0,32 ct.
Yellow gold 5.440
White gold 5.790



935RX
0,08 ct.
Yellow gold 1.640
White gold 1.780



937R
0,00 ct.
Yellow gold 1.970
White gold 2.240



937RX
0,06 ct.
Yellow gold 2.100
White gold 2.330



937RY
0,16 ct.
Yellow gold 2.900
White gold 3.120



996CS
0,00 ct.
Yellow gold 850
White gold 940



938Ø
0,00 ct.
Yellow gold 980
White gold 1.050



963Ø
0,00 ct.
Yellow gold 1.330
White gold 1.440



939RX
0,14 ct.
Yellow gold 2.720
White gold 2.970



939R
0,00 ct.
Yellow gold 1.840
White gold 2.090



940R
0,00 ct.
Yellow gold 1.170
White gold 1.310



940RX
0,12 ct.
Yellow gold 1.920
White gold 2.070



964AS
0,02 ct.
Yellow gold 790
White gold 830



870R
0,00 ct.
Yellow gold 1.760
White gold 1.910



881V
0,00 ct.
Yellow gold 1.280
White gold 1.380



1083V
0,00 ct.
Yellow gold 1.180
White gold 1.310



1106Ø
0,00 ct.
Yellow gold 920
White gold 970



1107V
0,00 ct.
Yellow gold 680
White gold 740



1140RY
0,33 ct.
Yellow gold 3.840
White gold 4.070



Polished or rustic
1140RX
0,05 ct.
Yellow gold 2.530
White gold 2.810



1139RY
0,17 ct.
Yellow gold 2.220
White gold 2.360



Polished or rustic
1139RX
0,01 ct.
Yellow gold 1.590
White gold 1.760



1144RX
0,01 ct.
Yellow gold 1.280
White gold 1.410



1143RX
0,01 ct.
Yellow gold 1.000
White gold 1.100



1145RX
0,01 ct.
Yellow gold 2.620
White gold 2.890



1146VX
0,01 ct.
Yellow gold 1.110
White gold 1.220



1138VX
0,01 ct.
Yellow gold 610
White gold 650



1137ØX
0,02 ct.
Yellow gold 2.190
White gold 2.400



1136ØX
0,02 ct.
Yellow gold 1.060
White gold 1.110



1147AX
0,05 ct.
Yellow gold 4.320
White gold 4.790



1157Ø
0,00 ct.
Yellow gold 2.010
White gold 2.220



1158Ø
0,00 ct.
Yellow gold 2.510
White gold 2.790



SO11Ø
0 ct ct.
Silver 220



SO12Ø
0 ct ct.
Silver 260



SO13R
0 ct ct.
Silver 220



SO14VX
0,01 ct ct.
Silver 270



1093R
0,00 ct.
Yellow gold 1.700
White gold 1.910



1094R
0,00 ct.
Yellow gold 2.330
White gold 2.630



1095RX
0,06 ct.
Yellow gold 2.400
White gold 2.660



1099R
0,00 ct.
Yellow gold 2.540
White gold 2.860



1096Ø
0,00 ct.
Yellow gold 1.100
White gold 1.170



1097Ø
0,00 ct.
Yellow gold 1.540
White gold 1.680



1098V
0,00 ct.
Yellow gold 1.560
White gold 1.720



1100V
0,00 ct.
Yellow gold 1.060
White gold 1.140



1104R
0,00 ct.
Yellow gold 1.180
White gold 1.310



1105R
0,00 ct.
Yellow gold 4.050
White gold 4.600



1160R
0,00 ct.
Yellow gold 1.270
White gold 1.420



1161R
0,00 ct.
Yellow gold 1.190
White gold 1.330



1162Ø
0,00 ct.
Yellow gold 1.990
White gold 2.200



1163Ø
0,00 ct.
Yellow gold 1.360
White gold 1.470



1164V
0,00 ct.
Yellow gold 470
White gold 500



1165V
0,00 ct.
Yellow gold 1.020
White gold 1.140

Open Your Heart rings



884R
0,00 ct.
Yellow gold 1.630
White gold 1.830



884RX
0,08 ct.
Yellow gold 2.050
White gold 2.260



884RY
0,24 ct.
Yellow gold 2.920
White gold 3.120



1109R
0,00 ct.
Yellow gold 1.590
White gold 1.790



886R
0,00 ct.
Yellow gold 1.100
White gold 1.230



886RY
0,09 ct.
Yellow gold 1.600
White gold 1.730



946RX
0,02 ct.
Yellow gold 1.750
White gold 1.950



946RY
0,06 ct.
Yellow gold 2.000
White gold 2.200



961RS
0,00 ct.
Silver 620



961RSX
0,02 ct.
Silver 690



885R
0,00 ct.
Yellow gold 1.720
White gold 1.940



969R
0,00 ct.
Yellow gold 1.850
White gold 2.040



969RS
0,00 ct.
Silver 550



969RSX
0,02 ct.
Silver 650

Open Your Heart earrings



962Ø
0,00 ct.
Yellow gold 1.070
White gold 1.150



962ØX
0,04 ct.
Yellow gold 1.320
White gold 1.400



888Ø
0,00 ct.
Yellow gold 1.080
White gold 1.140



888ØX
0,16 ct.
Yellow gold 1.940
White gold 2.000



903Ø
0,00 ct.
Yellow gold 910
White gold 960



903ØX
0,16 ct.
Yellow gold 1.730
White gold 1.780



941ØX
0,04 ct.
Yellow gold 1.110
White gold 1.170

Open Your Heart pendants, clasp and necklaces



944CSX
0,02 ct.
Yellow gold 670
White gold 690



944CX
0,02 ct.
Yellow gold 1.410
White gold 1.440



889VX
0,08 ct.
Yellow gold 950
White gold 990



943VX
0,02 ct.
Yellow gold 470
White gold 490



902V
0,00 ct.
Yellow gold 540
White gold 590



945VX
0,08 ct.
Yellow gold 920
White gold 960



995VSX
0,02 ct.
Yellow gold 480
White gold 490



994V
0,00 ct.
Yellow gold 1.310
White gold 1.420



889V
0,00 ct.
Yellow gold 520
White gold 560



918L
0,00 ct.
Yellow gold 1.970
White gold 2.200

Open Your Heart bracelets



942AX
0,04 ct.
Yellow gold 2.260
White gold 2.490



942AY
0,12 ct.
Yellow gold 2.760
White gold 2.990



942A
0,04 ct.
Yellow gold 1.750
White gold 1.940



942AS
0,04 ct.
Yellow gold 730
White gold 760



1117RX
0,06 ct.
Yellow gold 2.110
White gold 2.290



1118VX
0,03 ct.
Yellow gold 1.540
White gold 1.660



1120ØX
0,06 ct.
Yellow gold 1.880
White gold 2.040



1126ØX
0,10 ct.
Yellow gold 2.650
White gold 2.900



Drops for hoops - 1120ØX
Available in all Party colors
1121V
0,00 ct.
Yellow gold 610
White gold 640



Reversible hoops
Choose between opal, pink opal or pearl
1127ØX
0,06 ct.
Yellow gold 2.030
White gold 2.200



1122ØX
0,02 ct.
Yellow gold 1.290
White gold 1.380



1119VX
0,02 ct.
Yellow gold 680
White gold 720



Choose between opal, pink opal or pearl
1129RX
0,03 ct.
Yellow gold 1.780
White gold 1.970



Choose between opal, pink opal or pearl
1130R
0,00 ct.
Yellow gold 1.200
White gold 1.320



1128RX
0,08 ct.
Yellow gold 1.520
White gold 1.660



Necklace with oxidized silverchain
1123CSX
0,01 ct.
Yellow gold 590
White gold 620



Necklace with goldchain
1123CX
0,01 ct.
Yellow gold 1.380
White gold 1.410



1124ASX
0,01 ct.
Yellow gold 620
White gold 650



1124AX
0,01 ct.
Yellow gold 1.610



1124AY
0,03 ct.
Yellow gold 2.140



1153ØX
0,02 ct.
Yellow gold 870
White gold 930



1155VX
0,03 ct.
Yellow gold 910
White gold 980



SO15ØX
0,02 ct ct.
Silver 340



SO16ØX
0,04 ct ct.
Silver 380



SO17VX
0,01 ct ct.
Silver 270



Twigs rings



905RX
0,09 ct.
Yellow gold 2.420
White gold 2.620



905RY
0,43 ct.
Yellow gold 4.530
White gold 4.730



906R
0,00 ct.
Yellow gold 1.320
White gold 1.480



906RX
0,13 ct.
Yellow gold 2.470
White gold 2.630



907RY
0,68 ct.
Yellow gold 6.250
White gold 6.460



907RXM
0,15 ct.
Yellow gold 3.360
White gold 3.580



Choose between pink or blue tourmaline
907RXT
0,15 ct.
Yellow gold 3.630
White gold 3.850



910R
0,00 ct.
Yellow gold 1.720
White gold 1.940



910RXM
0,03 ct.
Yellow gold 2.050
White gold 2.270



910RY
0,29 ct.
Yellow gold 3.990
White gold 4.200



909RX
0,07 ct.
Yellow gold 2.570
White gold 2.820



909RY
0,21 ct.
Yellow gold 3.810
White gold 4.060



Choose between a white or gray pearl
1061RX
0,03 ct.
Yellow gold 1.460
White gold 1.580



1054RX
0,03 ct.
Yellow gold 1.200
White gold 1.300



Choose between a blue or pink tourmaline
1054RXT
0,03 ct.
Yellow gold 1.210
White gold 1.310



1054RY
0,18 ct.
Yellow gold 2.110
White gold 2.220



1054RXM
0,03 ct.
Yellow gold 1.200
White gold 1.300



Choose between a blue or pink tourmaline
1111RXT
0,06 ct.
Yellow gold 1.640
White gold 1.770



1111RXM
0,06 ct.
Yellow gold 1.640
White gold 1.770



911R
0,00 ct.
Yellow gold 2.430
White gold 2.690



911RX
0,12 ct.
Yellow gold 3.400
White gold 3.650



911RXM
0,12 ct.
Yellow gold 3.580
White gold 3.840



911RY
0,46 ct.
Yellow gold 5.500
White gold 5.760



911RSX
0,03 ct.
Silver 800



911RS
0,00 ct.
Silver 530



1034RX
0,06 ct.
Yellow gold 2.210
White gold 2.370



1034R
0,00 ct.
Yellow gold 1.830
White gold 2.000



1110RY
0,23 ct.
Yellow gold 3.000
White gold 3.180



1110RX
0,08 ct.
Yellow gold 1.970
White gold 2.150



1110RXM
0,08 ct.
Yellow gold 2.080
White gold 2.260



Choose between a blue or pink tourmaline
1110RXT
0,08 ct.
Yellow gold 2.080
White gold 2.260

Twigs pendants and clasp



913VX
0,06 ct.
Yellow gold 1.280
White gold 1.360



913VXM
0,06 ct.
Yellow gold 1.400
White gold 1.480



914VXM
0,03 ct.
Yellow gold 950
White gold 1.010



Choose between pink or blue tourmaline
914VXT
0,03 ct.
Yellow gold 1.000
White gold 1.060



914VY
0,14 ct.
Yellow gold 1.540
White gold 1.600



1101VX
0,03 ct.
Yellow gold 990
White gold 1.030



920V
0,00 ct.
Yellow gold 1.280
White gold 1.380



920VX
0,07 ct.
Yellow gold 1.790
White gold 1.890



912LX
0,09 ct.
Yellow gold 2.470
White gold 2.670

Twigs earrings



1035ØX
0,06 ct.
Yellow gold 1.560
White gold 1.600



1035ØY
0,36 ct.
Yellow gold 3.450
White gold 3.490



1035ØXM
0,06 ct.
Yellow gold 1.560
White gold 1.600



Choose between pink or blue tourmaline
1035ØXT
0,06 ct.
Yellow gold 1.620
White gold 1.660



915ØX
0,06 ct.
Yellow gold 1.560
White gold 1.640



915ØY
0,28 ct.
Yellow gold 2.870
White gold 2.950



1055Ø
0,00 ct.
Yellow gold 1.660
White gold 1.820



1055ØX
0,18 ct.
Yellow gold 3.350
White gold 3.500



1055ØY
1,08 ct.
Yellow gold 9.440
White gold 9.600



1055ØXM
0,18 ct.
Yellow gold 3.920
White gold 4.080



Choose between white or gray pearls
1062ØX
0,06 ct.
Yellow gold 2.110
White gold 2.220

Twigs bracelets



990A
0,00 ct.
Yellow gold 3.190
White gold 3.540



90AX
0,07 ct.
Yellow gold 3.660
White gold 4.000



1020Ø
0,04 ct.
Yellow gold 2.520
White gold 2.730



1042Ø
0,00 ct.
Yellow gold 2.970
White gold 3.340



1023Ø
0,00 ct.
Yellow gold 1.760
White gold 1.940



1019Ø
0,02 ct.
Yellow gold 2.720
White gold 2.930



1025R
0,00 ct.
Yellow gold 1.390
White gold 1.550



1025RX
0,40 ct.
Yellow gold 4.030
White gold 4.200



1018R
0,04 ct.
Yellow gold 1.720
White gold 1.890



1021C
0,00 ct.
Yellow gold 830
White gold 900



1026R
0,00 ct.
Yellow gold 2.550
White gold 2.840



1026RX
0,20 ct.
Yellow gold 3.760
White gold 4.050



1024V
0,00 ct.
Yellow gold 1.020
White gold 1.070



1084R
0,00 ct.
Yellow gold 1.200
White gold 1.330



1156V
0,00 ct.
Yellow gold 910
White gold 1.010



SO18Ø
0 ct ct.
Silver 220



SO19V
0 ct ct.
Silver 180

Violina rings



720R
0,00 ct.
Yellow gold 1.470
White gold 1.650



720RX
0,01 ct.
Yellow gold 1.560
White gold 1.740



721R
0,02 ct.
Yellow gold 2.380
White gold 2.670



721RY
0,43 ct.
Yellow gold 5.600
White gold 5.880



722R
0,03 ct.
Yellow gold 3.720
White gold 4.200



722RY
0,88 ct.
Yellow gold 11.030
White gold 11.690



762R
0,00 ct.
Yellow gold 4.350
White gold 4.960



762RX
0,14 ct.
Yellow gold 5.230
White gold 5.840



762RY
0,63 ct.
Yellow gold 9.150
White gold 9.770



947R
0,03 ct.
Yellow gold 1.430
White gold 1.580



763R
0,00 ct.
Yellow gold 2.850
White gold 3.240



947RX
0,07 ct.
Yellow gold 1.790
White gold 1.930



763RX
0,14 ct.
Yellow gold 3.730
White gold 4.120



1003RSX
0,02 ct.
Silver 530



922R
0,00 ct.
Yellow gold 2.710
White gold 3.000



922RX
0,04 ct.
Yellow gold 3.060
White gold 3.360



922RY
0,59 ct.
Yellow gold 7.160
White gold 7.460



1088R
0,00 ct.
Yellow gold 2.570
White gold 2.850

Violina pendants and clasp



719L
0,03 ct.
Yellow gold 2.130
White gold 2.380



724V
0,01 ct.
Yellow gold 860
White gold 930



767V
0,03 ct.
Yellow gold 1.840
White gold 2.050



984V
0,02 ct.
Yellow gold 1.000
White gold 1.090



1004VSX
0,02 ct.
Silver 450



923V
0,00 ct.
Yellow gold 1.450
White gold 1.580



923VX
0,01 ct.
Yellow gold 1.540
White gold 1.670



984VY
0,33 ct.
Yellow gold 3.230
White gold 3.340



1092V
0,02 ct.
Yellow gold 860
White gold 920



1090VX
0,02 ct.
Yellow gold 730
White gold 780



1134CX
0,01 ct.
Yellow gold 1.450
White gold 1.480



1134CSX
0,01 ct.
Yellow gold 660
White gold 690

Violina earrings

	921Ø 0,02 ct.	
	Yellow gold	840
	White gold	880


	723Ø 0,00 ct.	
	Yellow gold	1.120
	White gold	1.190

	723ØX 0,02 ct.	
	Yellow gold	1.290
	White gold	1.360

	723ØY 0,22 ct.	
	Yellow gold	2.860
	White gold	2.930

	1036Ø 0,00 ct.	
	Yellow gold	2.640
	White gold	2.940

	1005ØSX 0,02 ct.	
	Silver	530

	1089ØX 0,04 ct.	
	Yellow gold	1.590
	White gold	1.660

	1091Ø 0,04 ct.	
	Yellow gold	1.790
	White gold	1.890


	1085Ø 0,02 ct.	
	Yellow gold	2.220
	White gold	2.420

	1159ØY 0,37 ct.	1 piece
	Yellow gold	4.610
	White gold	4.770

Violina bracelets

	739A 0,01 ct.	
	Yellow gold	7.440
	White gold	8.320

	1007AX 0,11 ct.	
	Yellow gold	6.110
	White gold	6.720

	1108ASX 0,01 ct.	
	Yellow gold	630

	992AX 0,02 ct.	
	Yellow gold	3.030
	White gold	3.320

	1108AX 0,01 ct.	
	Yellow gold	1.520

	1108AY 0,03 ct.	
	Yellow gold	2.210

P E R B O R U P

Model	Name	Carat	EURO 14K			
			Item #	14K	Item #	14K white
43R	Ring	0,15 ct	310603	2.740	911403	2.940
46R	Ring	0,19 ct	314803	3.840	916103	4.170
48R	2 colored Ring	0,25 ct	318803	4.870	920403	5.290
52R	Ring	0,38 ct	322803	5.910	924103	6.260
54R	Ring	0,11 ct	309203	2.370	910003	2.580
60V	Pendants	0,08 ct	306903	1.790	907503	1.940
66Ø	EarRings	0,16 ct	312203	3.160	913103	3.390
72R	Ring	0,15 ct	311203	2.900	912103	3.130
80R	Ring	0,21 ct	315803	4.090	917003	4.420
82Ø	EarRings	0,22 ct	311503	2.970	911903	3.070
86V	Pendants	0,17 ct	318703	4.840	920003	5.190
96R	Ring	0,17 ct	318103	4.700	919803	5.130
108R	Gentleman ring 'Sandell'	0 ct	317403	4.520	919903	5.160
113R	Gentleman ring 'Duke'	0 ct	313403	3.470	915203	3.930
119B	Brooch	0,18 ct	322503	5.840	924003	6.240
121B	Brooch	0,23 ct	317203	4.460	918203	4.730
123R	Ring	0,17 ct	314203	3.680	915203	3.950
124R	Ring	0 ct	319803	5.140	920803	5.400
125V	Pendants	0,11 ct	308803	2.280	909403	2.420
126RX	2 colored Ring	0,17 ct	314003	3.620	915003	3.900
127R	Ring	0,26 ct	315203	3.950	916303	4.220
131A	Bracelet	0,09 ct	335303	9.170	939603	10.280
133R	Ring	0,08 ct	313603	3.520	915103	3.910
134R	Ring	0,08 ct	313603	3.520	915103	3.910
136Ø	Ear clips	0,2 ct	318203	4.730	919903	5.150
137R	Ring - Knot	0,26 ct	315703	4.080	916803	4.350
139R	Ring mabe Pearl	0,17 ct	322503	5.830	924403	6.340
142R	Ring	1 ct	335503	9.210	937203	9.650
146V	Pendants	0,15 ct	311703	3.030	912403	3.200
148R	Ring culturedPearl	0,06 ct	311603	3.000	912703	3.300
152A	Bracelet	1,21 ct	397603	25.360	1006203	27.600
161R	2 colored Ring culturedPearl	0,07 ct	308703	2.260	909503	2.450
162R	Ring	0,05 ct	312103	3.130	913403	3.480
163R	Ring culturedPearl	0,07 ct	310203	2.640	911103	2.880
166R	2 colored Ring	0,2 ct	318003	4.680	919403	5.040
167B	Brooch	0,07 ct	313003	3.380	914303	3.700
169B	Brooch	0,06 ct	316003	4.150	917503	4.530
170B	Brooch	0,12 ct	317703	4.600	919403	5.020
172V	Pendants mapePearl	0,09 ct	309903	2.560	910603	2.750
173R	Ring mabe Pearl	0,08 ct	311803	3.060	913003	3.360
174V	Pendants mapePearl	0,06 ct	309403	2.420	910003	2.600
181B	Brooch	0,18 ct	319403	5.040	920803	5.400
185B	Brooch	0,09 ct	315903	4.130	917003	4.420
190R	Ring	0,43 ct	325003	6.500	926403	6.850
191R	Ring	0,17 ct	319003	4.940	920503	5.310
191RX	Ring	0,17 ct	325703	6.680	927103	7.040
193R	Ring	0 ct	326103	6.780	928503	7.390
193RX	Ring	0,4 ct	331803	8.250	934103	8.860
194Ø	EarRings	0,34 ct	336503	9.470	939503	10.250
199Ø	Ear clips	0,16 ct	323503	6.100	925803	6.700
200R	Ring 2 farvet	0,08 ct	312503	3.250	913903	3.600
202Ø	EarRings	0,1 ct	314003	3.630	915103	3.920
203R	Ring	0,15 ct	312803	3.320	913903	3.600
204R	Ring	0,11 ct	310603	2.750	911503	2.980
207R	Ring culturedPearl 2 colored	0,07 ct	309203	2.370	910003	2.590
211R	Ring	0,08 ct	308203	2.110	908803	2.270
212R	2 colored Ring	0,08 ct	311103	2.880	912203	3.160
214R	Ring	0,03 ct	310603	2.750	911803	3.050
215Ø	EarRings	0,1 ct	314503	3.770	915903	4.110
218R	Ring	0,11 ct	312703	3.280	913803	3.580
225L	Triangle clasp	0 ct	306003	1.560	906703	1.740
225LX	Triangle clasp	0,06 ct	307503	1.940	908203	2.120
226L	Pipe clasp	0 ct	306003	1.540	906603	1.710
226LX	Pipe clasp	0,08 ct	307903	2.040	908503	2.210
227L	Heartclasp	0 ct	305403	1.390	905903	1.530
227LY	Heartclasp	0,43 ct	317503	4.540	918103	4.690
228LX	Heartclasp	0,14 ct	314703	3.810	915903	4.130
229L	Pearlclasp	0,08 ct	316003	4.140	917503	4.530
230L	Pearlclasp mabe Pearl	0,08 ct	316603	4.310	918203	4.720
231L	Pearlclasp	0,08 ct	318803	4.870	920603	5.350
233R	Ring 2 colored	0,19 ct	319603	5.090	921503	5.580
234Ø	Ear clips 2 colored	0,32 ct	330903	8.020	933503	8.690
236L	Pearlclasp	0,08 ct	314903	3.860	916203	4.210
236L1	Pearlclasp	0,08 ct	315103	3.910	916503	4.270
236LX	Pearlclasp	0,37 ct	321503	5.570	922903	5.930
237L	Pearlclasp lapis lazuli	0,08 ct	314703	3.800	916003	4.140
238L	Pearlclasp	0,08 ct	313703	3.560	915003	3.880

P E R B O R U P

Model	Name	Carat	EURO 14K			
			Item #	14K	Item #	14K white
239L	Pearlclasp	0,11 ct	313903	3.610	915103	3.920
240L	Heartclasp open Heart	0,08 ct	314803	3.840	916203	4.200
243ØL	EarRings	0,12 ct	320903	5.420	922803	5.910
244ØL	Ear clips lapis	0,1 ct	320403	5.290	922403	5.820
246ØL	Ear clips lapis	0,1 ct	318903	4.890	920703	5.360
247CL	Clipseclasp	0 ct	313603	3.530	914803	3.840
248CL	Clipseclasp	0 ct	314403	3.730	915703	4.070
249X	2 endestykkeclasp	0 ct	306203	1.610	906903	1.780
250R	Ring 2 colored	0,13 ct	313703	3.560	915103	3.910
251R	Ring	0,08 ct	311503	2.970	912703	3.280
252R	Ring 2 colored	0,12 ct	315203	3.940	916703	4.320
253R	Ring 2 colored	0,05 ct	310003	2.600	911103	2.880
255L	Pearlclasp	0 ct	309503	2.470	910703	2.760
256L	Pearlclasp	0 ct	306503	1.670	907203	1.860
257L	Pearlclasp	0 ct	309403	2.420	910403	2.700
258R	Ring	0,06 ct	311003	2.850	912103	3.140
260R	Ring	0,41 ct	323903	6.200	925403	6.600
261R	Ring	0,17 ct	316303	4.230	917703	4.590
265R	Ring	0,37 ct	326403	6.860	928303	7.350
267R	Ring 2 colored	0,11 ct	312503	3.250	913703	3.560
269CL	Clipseclasp	0 ct	313603	3.530	914803	3.840
270CL	Clipseclasp	0 ct	308503	2.200	909203	2.370
271R	Ring	0,07 ct	313903	3.590	915003	3.900
272Ø	Ear clips mabe Pearlr	0,1 ct	317503	4.530	919103	4.960
273R	Ring 2 colored	0,08 ct	312903	3.330	914203	3.680
276L	Pearlclasp -for 2 rows	0,08 ct	317403	4.510	919003	4.940
276LX	Pearlclasp -for 2 rows	0,32 ct	322803	5.910	924403	6.340
277R	Ring 2 colored	0,08 ct	313403	3.470	914903	3.850
278L	11mwith ballclasp u/band	0 ct	304103	1.050	904503	1.150
279L	11mwith ballclasp, with band	0 ct	304903	1.270	905403	1.400
279LX	11mwith ballclasp, with band and diamond.	0,02 ct	305603	1.450	906103	1.580
280L	14mwith ballclasp, with band	0 ct	307703	2.000	908603	2.220
280LX	14mwith ballclasp, with band and diamond.	0,04 ct	308703	2.260	909503	2.470
281L	18mwith ballclasp, with band	0 ct	312703	3.290	914203	3.680
281LX	18mwith ballclasp, with band and diamond.	0,06 ct	314003	3.620	915503	4.010
282L	Discosclasp with band	0 ct	307503	1.930	908303	2.150
282LX	Pearlclasp	0 ct	308103	2.090	908903	2.310
282LY	Pearlclasp	0,02 ct	309703	2.520	910603	2.750
283A	Gitter Bracelet	0,01 ct	327603	7.170	930503	7.930
286R	Ring	0,05 ct	310203	2.650	911303	2.930
287R	Ring	0,11 ct	314203	3.690	915803	4.090
289R	Ring	0,06 ct	313103	3.390	914503	3.770
291R	Ring 2 colored	0,1 ct	313503	3.510	915003	3.880
292R	Ring lapis lazuli	0,03 ct	312703	3.300	914303	3.700
293R	Ring 2 colored	0,08 ct	312703	3.300	914103	3.660
295Ø	Earstuds Heart m/Pearl	0,04 ct	314003	3.640	915403	4.000
296R	Ring	0,08 ct	311103	2.880	912203	3.160
297R	Ring	0,11 ct	313603	3.520	915003	3.880
299R	Ring	0,07 ct	315603	4.050	917503	4.530
300L	Pearlclasp	0,07 ct	311603	3.000	912603	3.270
301Ø	Ear clips	0,14 ct	321803	5.650	924003	6.220
302Ø	Ear clips	0,16 ct	323403	6.060	925503	6.630
303R	Ring	0,08 ct	315803	4.090	917503	4.550
304L	Pearlclasp	0,03 ct	306303	1.620	906803	1.750
307R	Ring mabe Pearl	0,08 ct	313803	3.570	915203	3.940
308Ø	Ear clips	0,1 ct	321303	5.520	923503	6.110
309A	Bean Bracelet Big	0,01 ct	336703	9.520	941103	10.670
310R	Ring	0,14 ct	316703	4.320	918303	4.740
310RX	Ring with Heartdiamant	0,18 ct	318703	4.850	920303	5.260
311L	Pearlclasp	0,08 ct	315903	4.110	917303	4.490
312L	Pearlclasp culturedPearl	0,03 ct	311903	3.090	913003	3.380
313Ø	Ear clips culturedPearlr	0,06 ct	318003	4.670	919703	5.120
314R	Ring	0,08 ct	312103	3.130	913303	3.450
319L	Pearlclasp PUTfor	0,11 ct	324403	6.340	927103	7.030
325R	2 colored classic Ring	0,22 ct	317403	4.520	919003	4.920
326R	2 colored Ring	0,08 ct	312503	3.250	913903	3.600
326RX	2 colored Ring	0,23 ct	315703	4.080	917103	4.430
328R	2 colored Ring	0,11 ct	313903	3.600	915303	3.960
329L	Pearlclasp culturedPearl	0,08 ct	315203	3.950	916603	4.310
330A	Heart Bracelet Big	0,01 ct	342503	11.050	947903	12.450
331A	Heart Bracelet small	0,01 ct	329003	7.530	932303	8.390
333A	Bracelet Rosalina	0,01 ct	325903	6.710	928603	7.430
334R	2 colored Ring	0,1 ct	312903	3.350	914203	3.690
336L	Pearlclasp	0,08 ct	310903	2.830	911803	3.060
337R	Ring	0 ct	311103	2.880	912303	3.190
337RH	Ring	0 ct	312903	3.330	914303	3.710
337RX	Ring	0,18 ct	317403	4.510	918903	4.900

P E R B O R U P

Model	Name	Carat	EURO 14K			
			Item #	14K	Item #	14K white
337RY	Ring	0,23 ct	318503	4.790	920003	5.180
338R	Ring	0 ct	315003	3.880	916703	4.340
338RH	Ring	0 ct	316503	4.280	918503	4.800
338RX	Ring	0,18 ct	319303	5.010	921103	5.470
338RY	Ring	0,29 ct	322503	5.830	924303	6.300
339L	2-rk. Heartclasp with mabe Pearl	0,08 ct	321303	5.530	923603	6.120
340A	Bean Bracelet small	0,01 ct	328703	7.450	931903	8.270
341L	Pearlclasp	0,08 ct	318903	4.910	920803	5.400
342L	11mwith ballclasp skråband	0,03 ct	306403	1.640	906903	1.790
343L	14mwith ballclasp skråband	0,05 ct	310203	2.640	911203	2.910
343LY	14mwith ballclasp skråband	0,41 ct	320703	5.360	921703	5.640
344L	with aillonclasp 18 mm skråband	0,08 ct	320703	5.380	923003	5.970
345L	14mwith ballclasp uden band	0 ct	305903	1.520	906503	1.690
346L	small Pipe clasp	0 ct	302803	720	903103	800
347R	Ring freshwaterpearl	0,03 ct	310003	2.600	911203	2.890
348R	Ring freshwaterpearl	0,05 ct	313103	3.390	914503	3.760
349R	Ring freshwaterpearl	0,05 ct	312603	3.260	914103	3.660
350Ø	Earstuds	0,06 ct	310303	2.670	911103	2.880
351Ø	Ear clips	0,1 ct	319903	5.160	921903	5.680
352Ø	Earstuds	0,06 ct	312003	3.120	913103	3.400
353A	Bracelet	1,02 ct	437803	35.820	1052403	39.620
354V	KlokkePendants	0 ct	309903	2.550	911003	2.850
354VX	KlokkePendants	0,16 ct	313703	3.560	914903	3.860
356Ø	VendeEarstuds Pearlr/diamond	0,06 ct	312403	3.200	913503	3.500
357Ø	VendeEarstuds Pearlr/diamond	0,06 ct	311503	2.970	912503	3.240
358Ø	VendeEarstuds Pearlr/diamond	0,06 ct	314503	3.770	916103	4.170
359L	Combiclasp for 2 rk.	0 ct	305703	1.460	906203	1.590
360Ø	Ear clips mabe Pearlr	0,2 ct	326303	6.830	928303	7.340
361L	Twisted Pipe clasp	0,04 ct	309503	2.460	910503	2.730
362R	Ring	0,05 ct	308503	2.210	909503	2.460
362RH	Ring, mens size	0 ct	306703	1.740	907703	1.980
363R	Ring	0,08 ct	310703	2.780	911903	3.090
363RH	Ring mens size	0 ct	308403	2.170	909503	2.470
364R	Ring	0,11 ct	314403	3.720	916003	4.150
364RH	Ring mens size	0 ct	311403	2.960	913103	3.390
365R	2 colored Ring	0,51 ct	327403	7.110	929203	7.590
366Ø	Earstuds	0,04 ct	308203	2.110	908903	2.310
367L	Pearlclasp	0,08 ct	312003	3.100	913003	3.380
370V	Heart	0 ct	304503	1.170	905103	1.310
371V	Heart ruby	0,02 ct	303903	1.010	904303	1.100
372V	Star ruby	0,02 ct	304703	1.210	905203	1.330
373V	Clover	0 ct	305503	1.420	906203	1.600
374V	Sun	0 ct	306703	1.720	907503	1.950
375V	Moon	0,02 ct	307203	1.850	908003	2.070
376A	8-tals Bracelet small	0,01 ct	317903	4.630	919903	5.150
377A	8-tals Bracelet Big	0,01 ct	323403	6.070	926303	6.820
379A	Bracelet	0,01 ct	328603	7.420	932003	8.320
381Ø	Earstuds	0,1 ct	313003	3.380	914403	3.720
382R	SunRing	0 ct	310503	2.730	911903	3.090
382RX	SunRing	0,25 ct	315503	4.020	916903	4.380
383R	SnowRing	0 ct	310503	2.730	911903	3.090
383RX	SnowRing	0,07 ct	312903	3.350	914303	3.710
384L	Pearlclasp	0,1 ct	315703	4.080	917303	4.490
385L	Pearlclasp	0,06 ct	311503	2.980	912603	3.260
386L	Pearlclasp mabe Pearl for 2 rows	0,22 ct	326603	6.900	928903	7.490
387L	Pearlclasp seahorse	0,04 ct	317003	4.400	919003	4.930
388L	Big Discos clasp	0 ct	316003	4.140	918003	4.680
389V	Kors	0 ct	304203	1.070	904703	1.200
390V	Anker	0 ct	304203	1.070	904703	1.200
391V	seahorse	0,02 ct	307203	1.850	908003	2.070
392L	Twinclasp	0 ct	308503	2.190	909403	2.440
392LX	Twinclasp	0,06 ct	310103	2.620	911103	2.870
393L	Pearlclasp	0 ct	308203	2.110	909203	2.370
393LX	Pearlclasp	0,06 ct	309803	2.540	910803	2.800
393LXY	Pearlclasp	0,44 ct	323103	6.000	924203	6.270
394L	2 colored Big twinclasp	0,16 ct	320503	5.330	922603	5.860
395R	Ring	0,05 ct	309703	2.500	910903	2.810
396R	Ring	0,08 ct	313103	3.400	914703	3.810
397R	Ring	0,11 ct	317603	4.570	919803	5.130
398L	Pearlclasp	0,1 ct	321603	5.610	924003	6.220
399L	Pearlclasp	0,08 ct	316903	4.380	918803	4.870
400L	Heartclasp	0 ct	309003	2.320	910103	2.610
400LX	Heartclasp	0,06 ct	310403	2.700	911503	2.980
400LXR	Heartclasp rubyer	0,06 ct	311203	2.890	912303	3.180
401R	Little SecretsRing, narrow	0 ct	306903	1.770	907703	2.000
401RX1	Little SecretsRing, narrow	0,01 ct	307203	1.860	908103	2.100
401RX2	Little SecretsRing, narrow	0,02 ct	307503	1.940	908403	2.180

P E R B O R U P

Model	Name	Carat	EURO 14K			
			Item #	14K	Item #	14K white
401RX3	Little SecretsRing, narrow	0,03 ct	307903	2.030	908803	2.270
401RX4	Little SecretsRing, narrow	0,04 ct	308203	2.120	909103	2.360
402R	Little SecretsRing, wide	0 ct	310003	2.590	911403	2.960
402RX1	Little SecretsRing, wide	0,02 ct	310503	2.720	911903	3.080
402RX2	Little SecretsRing, wide	0,04 ct	311003	2.840	912403	3.210
402RX3	Little SecretsRing, wide	0,06 ct	311503	2.970	912903	3.330
402RX4	Little SecretsRing, wide	0,08 ct	312003	3.100	913403	3.460
403L	Pearlclasp	0,05 ct	314603	3.790	916303	4.220
404Ø	Earstuds	0,06 ct	310303	2.670	911303	2.930
405L	Heartclasp	0 ct	308903	2.290	910003	2.580
405LX	Heartclasp	0,06 ct	310303	2.660	911403	2.950
405LY	Pearlclasp	0,94 ct	332303	8.380	933403	8.670
406L	Fancyclasp	0 ct	304503	1.160	905003	1.280
407L	Big Fancyclasp	0 ct	306403	1.660	907203	1.860
407LX	Big Fancyclasp	0,02 ct	307103	1.830	907903	2.030
408V	Medium Heart	0 ct	305003	1.280	905503	1.430
408VX	Medium Heart	0,71 ct	323103	5.990	923503	6.110
408VY	Medium Heart	1,04 ct	330103	7.820	930703	7.970
409V	Big Heart	0 ct	310003	2.600	911403	2.960
409VX	Big Heart	1,39 ct	343503	11.300	944703	11.620
409VY	Big Heart	1,8 ct	353503	13.910	955003	14.280
410V	HeartPendants	0 ct	311703	3.020	913103	3.390
413R	Ring	0 ct	312703	3.300	914503	3.750
413RX	Ring	0,12 ct	315603	4.050	917403	4.500
413RXY	Ring	0,24 ct	318503	4.810	920303	5.260
414R	Ring	0 ct	306503	1.690	907403	1.920
414RX	Ring	0,92 ct	331503	8.190	932403	8.420
415R	Ring	0 ct	309503	2.450	910703	2.770
415RX	StarfishRing	0,06 ct	311403	2.940	912603	3.260
416R	ClamRing	0 ct	307903	2.040	909003	2.320
417R	RomeoRing	0 ct	305103	1.310	905803	1.490
418R	RomeoRing	0 ct	308503	2.190	909703	2.500
418RX	RomeoRing	0,11 ct	313203	3.410	914403	3.720
419RX	Ring	0,11 ct	311903	3.090	912903	3.350
420R	RomeoRing	0 ct	306503	1.690	907403	1.920
421R	RomeoRing	0 ct	306403	1.640	907203	1.860
421RX	RomeoRing	0,1 ct	310603	2.740	911403	2.960
422R	RomeoRing	0 ct	307003	1.810	908003	2.060
422RX	RomeoRing	0,1 ct	311203	2.910	912203	3.170
423L	Pearlclasp	0,02 ct	306503	1.690	907203	1.860
424L	Pearlclasp	0,06 ct	311503	2.970	912603	3.270
425L	Pearlclasp butterfly Big	0,09 ct	319903	5.170	922003	5.700
426R	Ring	0,11 ct	315703	4.070	917403	4.510
427R	Ring	0,17 ct	318503	4.790	920303	5.260
428R	Ring	0,25 ct	326103	6.770	928403	7.360
429ØX	StarfishEarstuds	0,02 ct	306203	1.610	906803	1.750
430L	"First" ballclasp	0 ct	304403	1.130	904903	1.260
431L	"First" Heartclasp	0 ct	304403	1.130	904903	1.260
432L	chainclasp	0 ct	310303	2.670	911403	2.940
433L	chainclasp	0 ct	310603	2.740	911503	2.990
434L	chainclasp	0 ct	311303	2.920	912403	3.220
436R	JulieRing	0 ct	307603	1.960	908703	2.240
436RX	JulieRing	0,12 ct	312503	3.240	913503	3.510
437R	Ring	0,03 ct	312103	3.130	913503	3.510
438V	Pendants	0,02 ct	306703	1.720	907303	1.890
439Ø	Earstuds	0,02 ct	311603	3.000	912803	3.310
440R	Ring	0,03 ct	312103	3.130	913503	3.510
441V	Pendants	0,02 ct	306703	1.720	907303	1.890
442Ø	Earstuds	0,02 ct	311603	3.000	912803	3.310
443R	Ring	0,11 ct	312003	3.120	913203	3.430
444R	Ring	0,39 ct	326603	6.910	928703	7.450
447A	Bracelet	0,01 ct	337003	9.610	941003	10.650
448A	Bracelet - Long Bean	0,01 ct	326003	6.750	928703	7.440
449L	Pearlclasp saphire	0,04 ct	310603	2.740	911703	3.030
450L	Pearlclasp	0,08 ct	312503	3.250	913903	3.590
451R	Ring	0,08 ct	310003	2.580	910903	2.820
452R	Ring	0,07 ct	313403	3.460	914803	3.840
453R	Ring	0,13 ct	313203	3.430	914503	3.770
454R	Ring saphire	0,05 ct	315303	3.970	917003	4.420
456R	CloverRing	0,03 ct	313903	3.590	915703	4.060
457L	Cloverclasp	0,03 ct	310903	2.810	912103	3.130
458Ø	CloverEarstuds	0,04 ct	306703	1.730	907303	1.880
459L	Pearlclasp granat FRØ	0,02 ct	319703	5.120	922103	5.730
460R	Ring	0,08 ct	313003	3.370	914403	3.740
461R	Ring	0,08 ct	312303	3.180	913503	3.510
462L	Heartball	0 ct	306403	1.660	907203	1.850
462LX	Heartball	0,03 ct	307103	1.830	907803	2.020

P E R B O R U P

Model	Name	Carat	EURO 14K			
			Item #	14K	Item #	14K white
463L	Pearlclasp	0 ct	306403	1.660	907203	1.850
464L	Kometclasp	0 ct	307903	2.030	908903	2.290
465L	Pearlclasp	0,06 ct	312503	3.240	914003	3.630
466L	Pearlclasp	0 ct	318003	4.680	920203	5.250
467L	Hearttwinclasp	0,04 ct	316403	4.260	918203	4.730
468L	Pearlclasp	0,02 ct	311403	2.940	912503	3.250
469L	Pearlclasp	0,02 ct	311203	2.890	912403	3.200
472B	-	0,02 ct	316403	4.240	918103	4.700
473B	-	0,02 ct	316403	4.240	918103	4.700
474R	HeartRing	0 ct	307303	1.890	908303	2.150
474RX	HeartRing	0,12 ct	310203	2.650	911203	2.900
475R	Horseshoe Ring	0 ct	307303	1.890	908303	2.150
475RX	Horseshoe Ring	0,09 ct	310403	2.690	911403	2.940
476R	CloverRing	0 ct	307303	1.890	908303	2.150
477R	Ring with freshwaterpearl	0 ct	307503	1.940	908503	2.210
477RX	Ring	0,04 ct	308903	2.300	909903	2.560
478R	Ring with blue topaz	0 ct	307503	1.940	908503	2.210
479R	Ring	0,05 ct	308103	2.100	909103	2.350
480R	CrownRing nr. 1 Des: Lykke	0,08 ct	311403	2.950	912603	3.270
481R	CrownRing nr. 2 with ruby Des: Karin	0,04 ct	309903	2.560	910903	2.830
482R	CrownRing nr. 3 Des: Kell	0,09 ct	309403	2.420	910203	2.650
483R	CrownRing nr. 4 Des: Per	0,15 ct	315903	4.120	917403	4.510
484L	Elephantclasp	0,05 ct	312003	3.110	913303	3.440
485L	Pearlclasp	0,04 ct	308603	2.220	909403	2.440
487R	Ring	0,05 ct	314803	3.840	916503	4.280
488L	Dolphinclasp	0,02 ct	311303	2.930	912503	3.240
490R	Ring	0,08 ct	314603	3.780	916303	4.220
491R	Ring	0,12 ct	315003	3.900	916603	4.300
492R	Ring	0,09 ct	312403	3.210	913703	3.540
493L	2 colored Pearlclasp	0,07 ct	315703	4.060	917203	4.460
494R	Ring	0,08 ct	315003	3.900	916803	4.350
495L	Pearlclasp with blue topaz ell. ametyst	0,09 ct	319803	5.140	921703	5.630
496Ø	VendeEarstuds	0,08 ct	317003	4.400	918503	4.810
497R	Ring	0,08 ct	313403	3.460	914903	3.860
498L	Pearlclasp small butterfly	0 ct	310303	2.660	911403	2.950
498LX	Pearlclasp small butterfly	0,06 ct	311703	3.040	912903	3.330
498LY	Pearlclasp small butterfly	0,56 ct	324203	6.290	925403	6.580
499R	Ring for-farvet	0,12 ct	314003	3.640	915403	3.990
500Ø	Sticks & Pearls, gemstones with 2 par Pearlr	0 ct	302503	630	902503	650
500ØX	Sticks & Pearls, gemstones with 2 par Pearlr	0,04 ct	303403	880	903503	900
501Ø	Sticks & Pearls, gemstones with 2 par Pearlr	0 ct	302503	630	902503	650
501ØX	Sticks & Pearls, Heartr with 2 par Pearlr	0,06 ct	304503	1.160	904603	1.180
502Ø	Sticks & Pearls, gemstones with 2 par Pearlr	0 ct	302503	630	902503	650
503Ø	Earstuds - Heartr	0,02 ct	304603	1.180	904903	1.260
503ØY	Earstuds - Heartr	0,68 ct	322803	5.910	923403	6.060
504L	Pearlclasp Big ORKIDÉ	0,11 ct	320703	5.380	923003	5.980
504LY	Pearlclasp Big ORKIDÉ	0,61 ct	333603	8.730	935903	9.330
505R	Ring	0,04 ct	313103	3.390	914603	3.790
506L	Pearlclasp with culturedPearl	0 ct	308703	2.250	909703	2.510
507L	Pearlclasp with culturedPearl	0 ct	306603	1.700	907303	1.880
508L	Pearlclasp with culturedPearl	0 ct	306303	1.630	907003	1.800
509L	Pearlclasp	0,05 ct	313103	3.390	914503	3.760
510R	Ring	0,05 ct	311603	3.010	913003	3.380
511Ø	Earstuds	0,06 ct	311503	2.980	912603	3.260
512R	Ring	0,06 ct	311303	2.930	912603	3.260
513R	Ring	0,05 ct	310503	2.710	911703	3.030
514L	flowersclasp freshwaterpearlr	0 ct	307403	1.920	908203	2.120
515L	Pearlclasp	0,04 ct	310203	2.640	911403	2.940
516L	small golfclasp	0 ct	304203	1.090	904603	1.190
517L	Big golfclasp	0 ct	305803	1.490	906403	1.650
518L	Starclasp	0 ct	308103	2.090	909003	2.340
519Ø	Sticks & Pearls, gemstones with 2 par Pearlr	0 ct	302503	630	902503	650
520R	Ring mabe Pearl	0,08 ct	316903	4.380	918803	4.880
521L	Pearlclasp for 2 rk.	0,05 ct	315003	3.890	916703	4.320
522L	small orkidé-clasp	0 ct	311203	2.910	912403	3.220
522LX	small orkidé-clasp	0,03 ct	311903	3.080	913103	3.390
523Ø	-	0 ct	303703	950	904003	1.020
524R	Ring	0,06 ct	311503	2.970	912803	3.320
525Ø	Orkidé-Earstuds	0 ct	304803	1.230	905203	1.340
525ØX	Orkidé-Earstuds	0,02 ct	305503	1.410	905903	1.520
526R	Orkidé-Ring	0 ct	310403	2.700	911803	3.060
526RX	Orkidé-Ring	0,03 ct	311503	2.970	912803	3.320
527Ø	Earstuds	0,06 ct	308503	2.200	909103	2.350
528R	Ring	0,08 ct	314403	3.720	915903	4.120
529Ø	Earstuds with rosa Pearlr	0 ct	307703	2.000	908503	2.190
530Ø	Sticks & Pearls, gemstones with 2 par Pearlr	0 ct	302503	630	902503	650

P E R B O R U P

Model	Name	Carat	EURO 14K			
			Item #	14K	Item #	14K white
530ØX	Sticks & Pearls, Clovere with 2 par Pearlr	0,08 ct	305203	1.340	905303	1.360
531V	Vedh for Earstuds blue topaz, ametyst el citrin 2 stk.	0 ct	307903	2.050	908403	2.170
531Ø	Earstuds	0 ct	314903	3.860	916203	4.200
532L	Pearlclasp	0 ct	314703	3.800	916203	4.190
532V	Vedh for Pearlclasp, blue topaz, ametyst eller citrin	0 ct	304103	1.050	904303	1.110
533L	Pearlclasp	0,06 ct	314003	3.630	915503	4.020
534L	Pipe clasp	0,03 ct	308103	2.100	909003	2.330
535L	Pearlclasp, FISK blue eller hvide diamonds	0,04 ct	312503	3.250	913903	3.610
536L	Pearlclasp with Pearl grå,hvid el.rosa	0 ct	308703	2.260	909803	2.540
536LX	Pearlclasp	0,12 ct	311503	2.990	912603	3.270
537L	ballclasp zik-zak 11 mm	0 ct	306003	1.550	906703	1.720
538L	ballclasp zik-zak 14 mm	0 ct	307903	2.040	908903	2.290
538LX	ballclasp zik-zak 14 mm	0,06 ct	310003	2.580	910903	2.830
539L	ballclasp zik-zak 18 mm	0 ct	311003	2.840	912403	3.210
540R	Ring	0,11 ct	314603	3.780	916203	4.200
541L	Pearlclasp	0,03 ct	309403	2.420	910303	2.670
542R	Choice-Ring with Starr	0 ct	310603	2.750	912003	3.120
543R	Choice-Ring with flowers	0 ct	310603	2.750	912003	3.120
544R	Choice-Ring with Heartr	0 ct	310603	2.750	912003	3.120
545RX	Ring	0,1 ct	313003	3.380	914403	3.740
546Ø	Earstuds	0,04 ct	307903	2.030	908603	2.230
547L	Sweet Heart, Heart with Crown	0 ct	312003	3.120	913403	3.480
547LX	Sweet Heart, Heart uden Crown	0,06 ct	313103	3.400	914503	3.770
548R	Sweet Heart Ring	0 ct	314103	3.650	916003	4.150
548RX	Sweet Heart hvide eller farvede diamond.	0,09 ct	316003	4.150	917903	4.650
548RY	Sweet Heart hvide eller farvede diamond.	0,45 ct	324703	6.420	926703	6.920
549Ø	Sweet Heart Earstuds	0 ct	306003	1.550	906703	1.720
549ØX	Sweet Heart Ørestik. hvide el. farv. diamond.	0,12 ct	308903	2.310	909503	2.470
550L	Choice-clasp, Heartr	0 ct	304403	1.140	904903	1.260
551L	Choice-clasp, flowers	0 ct	304403	1.140	904903	1.260
552L	Choice-clasp, Starr	0 ct	304403	1.140	904903	1.260
553L	Pearlclasp	0 ct	308503	2.210	909603	2.490
554L	Pearlclasp	0,02 ct	310503	2.710	911603	3.010
555L	Pearlclasp	0,05 ct	312703	3.290	914103	3.660
557R	Ring	0,11 ct	313503	3.510	914903	3.860
558Ø	Orkidé-Ear clips	0 ct	319803	5.140	922203	5.760
559V	Charms, Frø	0,02 ct	308003	2.070	909003	2.330
560V	Charms, Dolphin	0,02 ct	305903	1.520	906503	1.690
561V	Charms, butterfly,	0 ct	304503	1.150	905003	1.280
562V	Charms, Fisk	0,02 ct	308003	2.070	909003	2.330
563L	Pearlclasp, Den Franske Lilje	0 ct	315603	4.040	917403	4.520
564R	StarRing	0 ct	315503	4.020	917703	4.590
564RX	-	0,17 ct	321303	5.530	923503	6.090
565Ø11	Earstuds	0,22 ct	307803	2.010	907903	2.050
565Ø5	Earstuds	0,1 ct	304703	1.220	904903	1.260
565Ø8	Earstuds	0,16 ct	306003	1.560	906203	1.610
566R	Ring	0,1 ct	316803	4.350	918603	4.830
567V	-	0 ct	303003	780	903403	860
567VS	-	0 ct	303503	900	903803	980
567VX	-	0,1 ct	305003	1.300	905403	1.380
568R	Ring	0,08 ct	312703	3.300	914103	3.660
569R	Ring	0,08 ct	312903	3.330	914203	3.680
570P	-	0 ct	300803	200	900803	200
570S	-	0 ct	301003	240	901003	250
570V	-	0,16 ct	306203	1.590	906403	1.640
570VS	-	0,06 ct	304703	1.200	904903	1.250
571L	Pearlclasp	0,05 ct	318003	4.680	920103	5.220
572L	Pearlclasp	0,05 ct	313603	3.520	915103	3.910
573L	Pearlclasp	0,05 ct	312703	3.300	914103	3.650
574R	Ring, tro håb and kærlighed	0,03 ct	311803	3.060	913303	3.450
575R	"Moon" Ring	0,18 ct	320003	5.200	922203	5.760
576L	Pearlclasp	0,05 ct	312603	3.260	914003	3.630
577L	Pearlclasp	0,08 ct	315803	4.090	917503	4.540
578V	"Flirt" Pendants	0,05 ct	307103	1.840	907803	2.020
579R	"Flirt" Ring	0,05 ct	309003	2.320	909903	2.570
580R	"Flirt" Ring	0,05 ct	310003	2.590	911103	2.880
581R	"Flirt" Ring	0,03 ct	310703	2.770	912003	3.100
582Ø	"Flirt" Earstuds	0,06 ct	313303	3.440	914403	3.740
583L	"Flirt" Pearlclasp	0,03 ct	312503	3.250	913903	3.600
584R	Mor & barn Ring m/hvid, blue ell. røde diamond	0,03 ct	310403	2.690	911703	3.020
585R	"Moon" Ring	0,09 ct	315703	4.060	917503	4.550
586Ø	"Moon" Earstuds	0,08 ct	312303	3.180	913403	3.470
587L	"Moon" Pearlclasp	0,07 ct	312703	3.300	914003	3.630
588L	"Joy" Pearlclasp	0,08 ct	314203	3.680	915803	4.090
589L	"Joy" Pearlclasp vendbar	0,1 ct	313403	3.460	914603	3.780
590L	"Joy" Pearlclasp vendbar	0,06 ct	309503	2.470	910403	2.700
591L	"Joy" Pearlclasp	0,03 ct	311603	3.000	912803	3.320

P E R B O R U P

Model	Name	Carat	EURO 14K			
			Item #	14K	Item #	14K white
592Ø	"Joy" Earstuds	0 ct	306003	1.540	906503	1.680
593R	"Joy" Ring	0 ct	313903	3.600	915803	4.100
594Ø	"Joy" Earstuds	0 ct	304303	1.110	904603	1.190
594ØX	"Joy" Earstuds	0,04 ct	305303	1.360	905603	1.440
595V	-	0 ct	304303	1.110	904703	1.220
596VPS	-	0 ct	304903	1.270	905303	1.370
596VX	-	0,06 ct	305603	1.450	906003	1.550
597Ø	Earstuds "Den franske lilje"	0 ct	311103	2.880	912303	3.190
599L	Pearlclasp	0,06 ct	321203	5.500	923903	6.190
600V	NøglePendants "The Key for my Heart"	0 ct	306403	1.640	907203	1.860
600VX	NøglePendants "The Key for my Heart"	0,14 ct	309703	2.520	910603	2.740
600VY	NøglePendants "The Key for my Heart"	0,63 ct	321703	5.630	922503	5.850
601A	Paragraf Bracelet	0,01 ct	352003	13.500	958203	15.120
603V	-	0 ct	303403	860	903703	950
604L	Pearlclasp	0,06 ct	313203	3.420	914503	3.770
605L	clasp	0,06 ct	307203	1.860	907803	2.020
606L	clasp	0,09 ct	310403	2.680	911403	2.950
607V	Nøgle charms "The Key for my Heart"	0,01 ct	304803	1.240	905303	1.370
607VX	Nøgle charms "The Key for my Heart"	0,07 ct	306903	1.770	907403	1.900
608R	Ring	0,06 ct	313403	3.480	914803	3.830
609R	Ring	0,06 ct	313203	3.430	914603	3.790
610R	Ring	0,08 ct	313803	3.570	915203	3.950
611R	Ring	0,04 ct	311703	3.020	913103	3.400
612L	clasp with 3 Pendants	0,05 ct	314203	3.680	915703	4.060
613L	clasp	0,02 ct	311703	3.020	912903	3.340
614L	clasp "Leaves" small 2 colored	0 ct	310803	2.800	912203	3.160
615L	clasp "Leaves" Big 2 colored	0 ct	317603	4.570	920103	5.210
616R	Ring "Leaves"	0 ct	307503	1.930	908403	2.170
617Ø	Earstuds "Leaves"	0 ct	305103	1.310	905503	1.420
618A	Ring culturedPearl	0,01 ct	333903	8.810	938103	9.890
622L	small svaneclasp	0 ct	314503	3.760	916303	4.220
622LX	small svaneclasp	0,05 ct	315803	4.100	917603	4.560
622LY	small svaneclasp	0,42 ct	325303	6.560	927003	7.020
623L	Big svaneclasp	0,1 ct	323003	5.960	925503	6.630
623LX	Pearlclasp	0,69 ct	338503	10.000	941103	10.670
624V	Svanecharms	0 ct	306603	1.700	907403	1.910
626L	small oval clasp	0 ct	308203	2.130	909203	2.370
626LX	small oval clasp	0,32 ct	316003	4.150	916903	4.390
627L	Big oval clasp	0 ct	311003	2.840	912303	3.180
627LX	Big oval clasp	0,4 ct	320603	5.350	921903	5.690
628L	SweetHeartclasp	0 ct	304503	1.160	905003	1.300
629L	Pearlclasp	0 ct	304103	1.050	904503	1.160
632R	Ring "Life"	0 ct	312503	3.250	914203	3.690
633L	clasp "Life"	0 ct	312803	3.310	914203	3.670
634Ø	Earstuds "Life"	0 ct	307403	1.900	908003	2.060
635V	Pendants bandstav	0,01 ct	305503	1.430	906203	1.610
635VX	Pendants bandstav	0,11 ct	308003	2.060	908603	2.230
636L	clasp	0 ct	310003	2.600	911303	2.920
636LX	clasp	0,06 ct	311703	3.020	912903	3.350
636LY	clasp	0,49 ct	323503	6.110	924803	6.440
637L	clasp	0,03 ct	310103	2.610	911303	2.920
637LY	clasp	0,76 ct	328403	7.360	929503	7.670
638R	Ring	0,56 ct	335203	9.130	938103	9.890
639R	Ring	0,1 ct	309803	2.540	910703	2.770
640L	clasp "Aqua" small, 2 colored	0,08 ct	312403	3.220	913703	3.550
641L	clasp "Aqua" Big, 2 colored	0,08 ct	315103	3.910	916803	4.350
642R	Ring "Aqua"	0 ct	308003	2.070	909103	2.350
642RX	Ring "Aqua"	0,03 ct	308603	2.230	909703	2.520
643Ø	Earstuds "Aqua"	0,04 ct	307503	1.950	908303	2.140
644L	clasp "Elle"	0 ct	321103	5.470	923703	6.160
644LX	clasp "Elle"	0,28 ct	327903	7.230	930503	7.920
645L	clasp "Sunrise"	0,1 ct	322903	5.940	925303	6.560
646Ø	Earstuds "Sunrise"	0,04 ct	311403	2.960	912603	3.260
647L	clasp "Amaryllis Belladonna"	0 ct	315903	4.130	918003	4.660
647LX	clasp "Amaryllis Belladonna"	0,38 ct	325603	6.640	927603	7.160
648Ø	Earstuds "Amaryllis Belladonna"	0 ct	308703	2.250	909703	2.520
648ØX	Earstuds "Amaryllis Belladonna"	0,08 ct	310703	2.760	911703	3.030
649R	Ring "Amaryllis Belladonna" wide	0 ct	316403	4.250	918703	4.850
649RX	Ring "Amaryllis Belladonna" wide	0,24 ct	322303	5.780	924503	6.370
650L	clasp	0,03 ct	313003	3.380	914703	3.810
651Ø	Earstuds m/freshwaterpearl	0,04 ct	305403	1.400	905703	1.460
652Ø	Earstuds m/freshwaterpearl	0,04 ct	305403	1.400	905703	1.460
653R	Ring 2 farvet	0,06 ct	311503	2.970	912703	3.290
654Ø	Earstuds Design: Per	0,06 ct	309403	2.420	910203	2.640
655Ø	Earstuds Design: Kell	0,04 ct	306003	1.540	906403	1.640
656Ø	Earstuds Design: Karin	0,1 ct	307803	2.010	908303	2.140
657Ø	Earstuds Design: Lykke	0,04 ct	304703	1.220	904903	1.260

P E R B O R U P

Model	Name	Carat	EURO 14K			
			Item #	14K	Item #	14K white
658R	Ring "Amaryllis Belladonna" narrow	0 ct	308803	2.270	910003	2.580
658RX	Ring "Amaryllis Belladonna" narrow	0,21 ct	314503	3.770	915703	4.080
659Ø	Earstuds "Amaryllis Belladonna" small	0 ct	304903	1.250	905303	1.370
659ØX	Earstuds "Amaryllis Belladonna" small	0,06 ct	306503	1.680	907003	1.800
660V	Pendants "Amaryllis Belladonna"	0 ct	305103	1.320	905803	1.490
661L	clasp "Little Angel"	0 ct	311603	3.010	912903	3.340
662L	clasp "Angel"	0 ct	318803	4.880	921203	5.500
663R	Ring "Angel"	0 ct	308303	2.150	909403	2.420
664Ø	Earstuds "Angel"	0 ct	304203	1.080	904503	1.170
665L	clasp "Jazz"	0 ct	308803	2.270	909903	2.550
665LX	clasp "Jazz"	0,07 ct	310403	2.690	911503	2.970
665LY	clasp "Jazz"	0,61 ct	323703	6.140	924703	6.420
666Ø	Earstuds "Jazz"	0 ct	305403	1.400	905803	1.500
666ØX	Earstuds "Jazz"	0,1 ct	306903	1.790	907303	1.890
667L	clasp "Palme"	0,06 ct	317003	4.410	919003	4.920
668R	Ring "Palme"	0,09 ct	315903	4.130	917603	4.560
669Ø	Earstuds "Palme"	0,02 ct	306003	1.560	906503	1.690
670L	clasp "Lucca"	0,02 ct	317203	4.460	919303	5.000
671R	Ring	0,06 ct	309303	2.410	910203	2.650
672R	Ring with culturedPearl	0,06 ct	309003	2.320	909903	2.550
673R	Ring	0,06 ct	312703	3.300	914303	3.700
674R	Ring	0,1 ct	313403	3.470	914703	3.810
675R	Ring	0,08 ct	314503	3.770	916203	4.200
676R	Ring	0,08 ct	313003	3.360	914503	3.750
677R	Ring	0,08 ct	313803	3.580	915503	4.010
678V	Kors Pendants small	0,03 ct	306003	1.540	906603	1.700
679V	Kors Pendants Big	0,08 ct	308503	2.190	909203	2.390
680V	Heart Pendants small	0,03 ct	307003	1.820	907803	2.010
681V	Heart Pendants Big	0,08 ct	310403	2.680	911503	2.970
682V	Heart Pendants	0 ct	304903	1.270	905503	1.430
683R	Ring with Pendants	0 ct	312903	3.350	914703	3.810
683RA	Ring with amatystPendants	0 ct	311203	2.910	912703	3.300
684R	Ring	0,08 ct	313803	3.580	915503	4.010
685V	Pendants	0,03 ct	306803	1.750	907503	1.930
686R	Ring	0,15 ct	316203	4.200	917903	4.640
687R	Ring	0,12 ct	315603	4.050	917403	4.500
688R	Ring	0,1 ct	311503	2.980	912703	3.300
689V	Pendants	0,02 ct	304303	1.110	904703	1.200
690R	Ring 2 farvet	0,52 ct	333003	8.560	935103	9.110
691R	Ring 2 farvet	0,27 ct	321203	5.490	922903	5.940
692V	Wishes Love	0 ct	310503	2.730	911903	3.090
692VX	Wishes Love	0,32 ct	318303	4.740	919703	5.100
693V	Wishes Kisses	0 ct	307903	2.050	908903	2.310
693VX	Wishes Kisses	0,32 ct	315703	4.060	916703	4.320
694V	Wishes Happiness	0 ct	309803	2.530	911003	2.860
694VX	Wishes Happiness	0,32 ct	317503	4.540	918803	4.870
695V	Wishes Luck	0 ct	309003	2.330	910203	2.630
695VX	Wishes Luck	0,32 ct	316803	4.350	917903	4.640
696L	Trix clasp	0 ct	305503	1.420	906203	1.590
697V	KampalaPendants with calcedon	0 ct	318703	4.840	921203	5.500
697VX	KampalaPendants with calcedon	0,06 ct	320103	5.220	922703	5.880
697VY	KampalaPendants with dråbe	0,87 ct	341003	10.640	943503	11.300
698R	Ring	0,41 ct	334403	8.930	936703	9.530
699AX	Bracelet	1,29 ct	384903	22.060	991203	23.700
700R	Ring 2 colored	0,66 ct	339403	10.220	941903	10.870
701L	Heartclasp	0,11 ct	316703	4.340	918403	4.770
702L	clasp	0 ct	311503	2.970	913003	3.360
703R	Ring	0,25 ct	326603	6.910	929003	7.540
704R	Ring 2 farvet	0,2 ct	314703	3.810	916003	4.150
705R	Ring	0,16 ct	312303	3.190	913403	3.470
706L	Heartclasp	0 ct	305503	1.410	906103	1.580
707R	Ring	0,08 ct	308203	2.130	909003	2.340
708Ø	Earstuds	0,1 ct	307003	1.800	907403	1.910
709V	Pendants	0,05 ct	303903	1.000	904203	1.080
710R	Ring	0,17 ct	312503	3.250	913403	3.470
711R	Ring	0,17 ct	313403	3.460	914403	3.730
712R	Ring	0,11 ct	310903	2.810	911903	3.080
712RX	Ring	0,29 ct	314703	3.800	915703	4.080
713R	Ring	0 ct	308703	2.250	909703	2.520
713RX	Ring	0,18 ct	312503	3.240	913603	3.520
714V	Kors Pendants Twisted	0,11 ct	310803	2.800	911803	3.050
715V	Kors Pendants	0,03 ct	310503	2.720	911803	3.050
716R	Ring "Jazz"	0 ct	310003	2.600	911403	2.940
716RX	Ring "Jazz" with hvide diamond.	0,45 ct	319003	4.930	920403	5.280
716RXS	Ring "Jazz" with sorte diamond.	0,45 ct	319003	4.930	920403	5.280
717V	Studenter Pendants	0 ct	304203	1.070	904703	1.200
718L	clasp "Amaryllis Belladonna" small	0 ct	308303	2.150	909303	2.410

P E R B O R U P

Model	Name	Carat	EURO 14K			
			Item #	14K	Item #	14K white
718LY	clasp "Amaryllis Belladonna" small	0,71 ct	329103	7.560	930103	7.820
719L	clasp "Violina"	0,03 ct	308203	2.130	909203	2.380
720R	Ring "Violina" small	0 ct	305703	1.470	906403	1.650
720RX	Ring "Violina" small	0,01 ct	306003	1.560	906703	1.740
721R	Ring "Violina" Medium	0,02 ct	309203	2.380	910303	2.670
721RY	Ring "Violina" Medium	0,43 ct	321603	5.600	922703	5.880
722R	Ring "Violina" Big	0,03 ct	314403	3.720	916203	4.200
722RY	Ring "Violina" Big	0,88 ct	342503	11.030	945003	11.690
723Ø	Earstuds "Violina"	0 ct	304403	1.120	904603	1.190
723ØX	Earstuds "Violina"	0,02 ct	305003	1.290	905303	1.360
723ØY	Earstuds "Violina"	0,22 ct	311003	2.860	911303	2.930
724V	Pendants "Violina" small	0,01 ct	303403	860	903603	930
724VY	Pendants "Violina" small	0,19 ct	308503	2.210	908803	2.280
725V	Little Wishes Love	0 ct	305403	1.390	906103	1.580
726V	Little Wishes Kisses	0 ct	305803	1.490	906503	1.690
727V	Little Wishes Happiness	0 ct	305603	1.440	906303	1.630
728V	Little Wishes Luck	0 ct	304403	1.120	904903	1.260
729V	Kors	0 ct	308603	2.230	909703	2.510
729VX	Kors	0,27 ct	315603	4.050	916703	4.340
734Ø	Earstuds butterflies	0 ct	305503	1.430	906103	1.580
735V	Pendants blomst "Bliss"	0 ct	306703	1.720	907503	1.940
736V	Pendants Heart "Bliss"	0 ct	305003	1.280	905503	1.420
736VX	Pendants Heart "Bliss"	0,05 ct	306003	1.560	906603	1.710
737V	Pendants Star "Bliss"	0 ct	305203	1.350	905903	1.510
738R	Ring Heart "Bliss"	0 ct	304703	1.200	905203	1.330
738RX	Ring Heart "Bliss"	0,09 ct	306703	1.720	907203	1.860
739A	Bracelet "Violina"	0,01 ct	328703	7.440	932003	8.320
740L	clasp "Kamille"	0,08 ct	316303	4.230	918203	4.720
741R	Ring "Kamille"	0,08 ct	315203	3.950	917103	4.430
742Ø	Earstuds "Kamille"	0,08 ct	309003	2.340	909803	2.530
743R	Ring	0,11 ct	314103	3.650	915503	4.020
744R	Ring	0,11 ct	313703	3.550	915103	3.910
745R	Ring "Papillon"	0,01 ct	308403	2.160	909303	2.410
746V	Pendants "Papillon"	0,01 ct	309903	2.570	910703	2.760
747Ø	Earstuds "Papillon"	0,02 ct	308103	2.100	908703	2.260
748R	Ring small "Kampala"	0,04 ct	307203	1.870	908003	2.080
749R	Ring Big Kampala	0,08 ct	311203	2.900	912403	3.220
#####	#REFERENCE!	#####	#####	#####	#####	#####
750Ø	Earstuds "Kampala"	0,04 ct	305503	1.430	905903	1.530
751Ø	Earstuds with ædelstene	0 ct	309403	2.430	910003	2.600
752V	Pendants with ædelsten	0 ct	305503	1.430	906003	1.550
753L	Fleur clasp	0 ct	305003	1.300	905603	1.440
754Ø	Heartørestik	0,02 ct	306103	1.580	906703	1.720
755R	Ring "Lily"	0,02 ct	310303	2.660	911303	2.930
756Ø	Ørehænger "Lily"	0,04 ct	309803	2.530	910603	2.740
756ØX	Ørehænger "Lily"	1,1 ct	341203	10.700	941903	10.890
757V	Pendants "Lily"	0,02 ct	305903	1.510	906403	1.660
758R	HeartRing with TahitiPearl	0 ct	309703	2.500	910803	2.800
758RX	HeartRing with TahitiPearl	0,09 ct	310603	2.750	911603	3.010
759V	-	0,02 ct	304103	1.060	904403	1.140
760V	-	0 ct	304403	1.140	904903	1.250
761V	-	0,02 ct	305303	1.360	905803	1.490
762R	bandRing "Violina" wide	0 ct	316803	4.350	919103	4.960
762RX	bandRing "Violina" wide	0,14 ct	320203	5.230	922503	5.840
762RY	bandRing "Violina" wide	0,63 ct	335203	9.150	937603	9.770
763R	bandRing "Violina" narrow	0 ct	311003	2.850	912503	3.240
763RX	bandRing "Violina" narrow	0,14 ct	314403	3.730	915903	4.120
764Ø	Earstuds "Bliss"	0,02 ct	306603	1.710	907203	1.860
765R	bandRing "Kamille"	0 ct	314103	3.650	916003	4.150
765RX	bandRing "Kamille"	0,12 ct	317003	4.400	918903	4.910
766R	2 colored Ring "Kamille"	0 ct	310603	2.740	911903	3.080
766RX	2 colored Ring "Kamille"	0,08 ct	312203	3.170	913503	3.500
767V	Pendants "Violina" Big	0,03 ct	307103	1.840	907903	2.050
769A	Bracelet "Orkide"	0,01 ct	332103	8.340	935903	9.330
769AX	Bracelet "Orkide"	0,18 ct	337903	9.840	941703	10.840
770R	Ring "Orkide"	0 ct	306303	1.630	907103	1.830
770RX	Ring "Orkide"	0,12 ct	310403	2.690	911203	2.890
771R	Ring "SweetHeart swing"	0 ct	313203	3.420	914903	3.860
771RX	Ring "SweetHeart swing"	0,22 ct	318503	4.800	920203	5.240
771RY	Ring "SweetHeart swing"	0,44 ct	323803	6.180	925503	6.620
772R	Ring 2 colored	0,11 ct	311603	3.000	912603	3.270
773Ø	-	0 ct	302903	740	903103	790
774Ø	-	0 ct	302603	670	902703	700
775Ø	-	0 ct	303203	820	903403	870
776Ø	-	0 ct	302703	700	902903	750
777Ø	-	0 ct	303403	880	903703	950
778Ø	-	0 ct	302903	730	903003	770

P E R B O R U P

Model	Name	Carat	EURO 14K			
			Item #	14K	Item #	14K white
779V	-	0 ct	302403	620	902703	680
780V	-	0 ct	304603	1.180	905103	1.310
781V	-	0 ct	304403	1.140	904903	1.250
782V	-	0 ct	308403	2.160	909403	2.430
783V	-	0,04 ct	304703	1.210	905003	1.290
784V	-	0,06 ct	305003	1.300	905203	1.350
785V	Pendants for lædersnor with Heart	0 ct	307603	1.970	908603	2.230
786V	HeartPendants	0,03 ct	304803	1.230	905203	1.330
787Ø	HeartEarstudse	0,04 ct	308903	2.310	909803	2.530
788R	Ring	0 ct	309403	2.430	910503	2.720
788RX	Ring	0,03 ct	309703	2.520	910803	2.800
789R	GranatRing	0,05 ct	313503	3.490	914903	3.870
790R	Ring	0,27 ct	315803	4.100	917103	4.440
791R	-	0,08 ct	308703	2.240	909403	2.440
792R	-	0,08 ct	308803	2.280	909703	2.510
793R	Ring "sweetHeart swing" small	0 ct	308303	2.140	909303	2.410
793RX	Ring "sweetHeart swing" small	0,09 ct	310403	2.690	911403	2.950
793RY	Ring "sweetHeart swing" small	0,18 ct	312503	3.230	913503	3.490
794R	Ring "Scoop 5"	0,15 ct	317003	4.410	919003	4.920
795R	Ring "Scoop 3" with ametyst	0,06 ct	311603	3.000	912903	3.350
796R	Ring "Scoop 3"	0,1 ct	314003	3.620	915603	4.050
797A	CharmsBracelet	0,01 ct	324503	6.370	927303	7.080
799A	Bracelet	0 ct	332203	8.370	936303	9.420
799AY	Bracelet	1,19 ct	359703	15.510	963803	16.570
800R	Ring "Scoop" with ametyst	0 ct	314003	3.630	915903	4.130
801ØFK	-	0 ct	303103	800	903203	820
801ØFL	-	0 ct	303303	850	903403	880
801ØPK	-	0 ct	302703	680	902803	710
801ØPL	-	0 ct	302903	730	903003	770
801ØSK	-	0 ct	302903	740	903003	760
801ØSL	-	0 ct	303103	790	903203	820
802R	Ring "Scoop 1" Medium	0,03 ct	305903	1.530	906603	1.710
802RR	Ring "Scoop 1" Medium with ruby	0 ct	305503	1.420	906203	1.600
803R	Ring "Orkide" wide	0 ct	309403	2.440	910703	2.780
803RY	Ring "Orkide" wide	0,18 ct	315603	4.040	916903	4.370
804V	Pendants "Scoop 2" small	0,05 ct	304803	1.240	905203	1.350
805Ø	Earstudse "Scoop"	0,06 ct	305503	1.410	905803	1.500
806V	Pendants "Scoop 2" Big	0,08 ct	306503	1.670	907103	1.830
807R	Ring "Scoop 1" small	0,02 ct	304703	1.220	905203	1.350
808R	Ring "Scoop 1" Big	0,05 ct	306403	1.660	907103	1.830
809L	clasp "Scoop 5" Big	0,18 ct	317003	4.410	918903	4.890
810L	clasp "Scoop 3" small	0,1 ct	310103	2.620	911103	2.880
811V	Pendants "Scoop 1" small	0,02 ct	302003	520	902203	550
812V	Pendants "Scoop 1" Big	0,03 ct	302403	610	902503	650
813R	Ring "SweetHeart Puzzle Mini"	0 ct	303403	870	903803	970
814R	Ring "SweetHeart Puzzle small"	0 ct	304303	1.100	904803	1.230
815R	Ring "SweetHeart Puzzle Medium"	0 ct	305303	1.370	906003	1.540
815RX	Ring "SweetHeart Puzzle Medium"	0,08 ct	307203	1.870	907903	2.050
816R	Ring "SweetHeart Puzzle Big"	0 ct	306703	1.720	907503	1.950
817R	Ring "SweetHeart Puzzle 2"	0 ct	305703	1.470	906403	1.650
818R	Ring "SweetHeart Puzzle 3"	0 ct	306203	1.600	907003	1.800
819Ø	Earstudse "SweetHeart"	0 ct	304003	1.030	904303	1.110
819ØX	Earstudse "SweetHeart"	0,16 ct	307903	2.030	908203	2.120
820V	Pendants "SweetHeart small"	0 ct	302903	750	903203	820
820VX	Pendants "SweetHeart small"	0,04 ct	304903	1.250	905103	1.320
820VY	Pendants "SweetHeart small"	0,07 ct	305303	1.360	905603	1.440
821V	Pendants "SweetHeart Big"	0 ct	304203	1.070	904703	1.200
821VX	Pendants "SweetHeart Big"	0,08 ct	306903	1.770	907303	1.890
821VY	Pendants "SweetHeart Big"	0,16 ct	308003	2.080	908503	2.210
822VX	Pendants Baby Elephant	0,11 ct	315003	3.900	916703	4.320
823R	Ring "Syrén small"	0 ct	305803	1.490	906503	1.690
824R	Ring "Syrén Medium"	0 ct	306303	1.620	907103	1.830
825R	Ring "Syrén Big"	0 ct	306703	1.720	907503	1.950
826V	Pendants "Syrén small"	0 ct	306503	1.670	907403	1.900
827V	Pendants "Syrén Medium"	0 ct	308903	2.300	910103	2.620
828V	Pendants "Syrén Big"	0 ct	312403	3.220	914203	3.680
829Ø	Earstudse "Syrén Små"	0 ct	303203	830	903403	880
830Ø	Earstudse "Syrén Lange"	0 ct	307803	2.020	908803	2.270
831V	Pendants 7-jern	0,01 ct	305903	1.530	906703	1.720
832R	Ring "Cirkel small"	0,02 ct	307803	2.020	908803	2.270
833R	Ring "Cirkel Medium"	0,02 ct	308003	2.070	909003	2.330
834R	Ring "Cirkel Big"	0,06 ct	310703	2.770	912003	3.100
835V	Pendants "Cirkel"	0,02 ct	303303	840	903603	920
836R	Ring Cocktail	0,18 ct	321903	5.680	923803	6.180
837V	Pendants "Syrén lang"	0 ct	303303	850	903703	960
838Ø	Earstuds "Cirkel"	0,02 ct	304403	1.130	904703	1.210
839V	HeartPendants "Cirkel"	0,02 ct	306103	1.580	906803	1.750

P E R B O R U P

Model	Name	Carat	EURO 14K			
			Item #	14K	Item #	14K white
841R	Ring "Bliss"	0 ct	306503	1.690	907403	1.920
842Ø	Earstudse "Bliss "	0 ct	305703	1.460	906203	1.600
843V	Pendants "Bliss "	0 ct	302903	750	903203	820
844R	Ring "Bliss"	0 ct	304703	1.210	905303	1.360
845L	clasp "Bliss"	0 ct	305703	1.470	906403	1.640
846R	Ring "Cirkel"	0,06 ct	311703	3.020	913103	3.390
847R	Ring "Cirkel"	0,02 ct	306003	1.540	906703	1.730
848L	clasp "Cirkel"	0,02 ct	307503	1.950	908403	2.180
849L	Fleur clasp (Oval)	0 ct	305003	1.300	905603	1.440
850R	Ring "Kamille"	0,09 ct	310403	2.690	911503	2.980
851R	Ring "Kamille"	0,04 ct	309603	2.480	910703	2.780
852R	Ring "Kamille"	0,04 ct	308903	2.300	910003	2.580
853R	Ring "Kamille"	0 ct	307903	2.050	908903	2.310
854R	Ring "Kamille"	0 ct	308703	2.250	909803	2.540
855R	Ring "Kamille"	0 ct	308703	2.250	909803	2.540
856R	Ring "Kamille"	0 ct	307703	2.000	908703	2.250
857R	Ring "Kamille"	0,07 ct	309703	2.500	910703	2.770
858V	Pendants "Kamille"	0,04 ct	303603	930	903903	1.000
859L	clasp "Kamille"	0,04 ct	308803	2.270	909703	2.520
860Ø	Earstuds "Kamille"	0 ct	305903	1.520	906503	1.690
861Ø	Earstuds små "Kamille"	0,02 ct	303503	900	903703	940
862Ø	Earstuds Medium "Kamille"	0,04 ct	304003	1.020	904103	1.060
863A	Bracelet "Kamille" wide	0,01 ct	325903	6.710	928503	7.390
864A	Bracelet "Kamille" narrow	0,01 ct	320703	5.370	922703	5.880
866R	Ring "Clover""	0 ct	309703	2.500	910903	2.830
867L	small "first" Heart	0 ct	303203	820	903503	890
868R	Ring Changeling "Fairytale" inkl. 3 sten	0 ct	308003	2.060	908703	2.260
869R	Ring Changeling "Clover" inkl. 3 sten	0 ct	308603	2.230	909503	2.460
870R	Ring Changeling "Hearts" inkl. 3 sten	0 ct	306803	1.760	907403	1.910
871R	Ring Changeling "Dream" inkl. 3 sten	0 ct	307703	1.980	908403	2.170
872R	Ring "Clover"	0 ct	308703	2.250	909803	2.540
873R	Ring "Clover"	0,06 ct	308403	2.160	909203	2.370
874R	Ring "Clover"	0,06 ct	306403	1.640	906903	1.770
875V	Pendants "Clover"	0 ct	304903	1.250	905403	1.390
876Ø	Earstuds "Clover"	0 ct	303303	850	903503	900
877R	Ring Changeling "Wave"" inkl. 3 sten	0 ct	308903	2.310	909803	2.540
877RX	Ring Changeling "Wave" inkl. 3 sten	0,22 ct	315003	3.900	916003	4.140
877RXS	Ring Changeling "Wave" inkl. 3 sten (sorte diamond.)	0,22 ct	312603	3.270	913503	3.510
878R	Ring Changeling "Look" inkl. 3 sten	0 ct	308703	2.260	909603	2.490
878RX	Ring Changeling "Look" inkl. 3 sten	0,3 ct	315903	4.110	916703	4.340
879V	Pendants Changeling "Fairytale" inkl. 3 sten	0 ct	305203	1.330	905503	1.430
880V	Pendants Changeling "Dream" inkl. 3 sten	0 ct	304503	1.150	904803	1.230
881V	Pendants Changeling "Heart" inkl. 3 sten	0 ct	305003	1.280	905403	1.380
882V	Pendants Orkidé	0 ct	304203	1.070	904703	1.200
882VX	Pendants Orkidé	0,02 ct	304703	1.200	905103	1.320
883R	Ring "Pebbles" wide	0 ct	314503	3.770	916603	4.300
884R	Ring "Open Your Heart"	0 ct	306303	1.630	907103	1.830
884RX	Ring "Open Your Heart"	0,08 ct	307903	2.050	908703	2.260
884RY	Ring "Open Your Heart"	0,24 ct	311303	2.920	912003	3.120
885R	Ring "Open Your Heart"	0 ct	306703	1.720	907503	1.940
886R	Ring "Open Your Heart"	0 ct	304303	1.100	904803	1.230
886RY	Ring "Open Your Heart"	0,09 ct	306203	1.600	906703	1.730
887R	Ring "Open Your Heart"	0 ct	309803	2.540	911203	2.890
888Ø	Earstuds Heart m Pearl	0 ct	304203	1.080	904403	1.140
888ØX	Earstuds Heart m Pearl	0,16 ct	307503	1.940	907703	2.000
889V	Pendants small Heart m Pearl	0 ct	302003	520	902203	560
889VM	Pendants small Heart m Moonstone	0 ct	302303	580	902403	620
889VX	Pendants small Heart m Pearl	0,08 ct	303703	950	903903	990
890R	Ring "Pebbles"	0 ct	308803	2.270	910003	2.580
891Ø	Earstuds "Pebbles"	0 ct	304903	1.260	905303	1.360
892R	Ring "Open Your Heart"	0 ct	308303	2.150	909403	2.430
893RD	Ring "Pebbles" narrow	0 ct	309903	2.570	911303	2.920
900AL	Braceletsclasp Changeling	0 ct	306203	1.610	906803	1.750
900ALX	Braceletsclasp Changeling	0,04 ct	307203	1.870	907803	2.010
901AL	Braceletsclasp Changeling	0 ct	306203	1.610	906803	1.750
901ALX	Braceletsclasp Changeling	0,04 ct	307203	1.870	907803	2.010
902V	Pendants Heart	0 ct	302103	540	902303	590
903Ø	Earstuds Heart u/Pearl	0 ct	303503	910	903703	960
903ØX	Earstuds Heart u/Pearl	0,16 ct	306703	1.730	906903	1.780
904R	Ring Changeling "Raspberry"	0 ct	309903	2.570	911003	2.850
904RY	Ring Changeling "Raspberry"	0,44 ct	324903	6.460	926003	6.740
905R	Ring "Twigs"	0 ct	306303	1.630	907103	1.830
905RX	Ring "Twigs"	0,09 ct	309403	2.420	910103	2.620
905RXM	Ring "Twigs" with 3 Moonstone	0,09 ct	310103	2.610	910903	2.810
905RY	Ring "Twigs"	0,43 ct	317503	4.530	918203	4.730
906R	Ring "Twigs"	0 ct	305103	1.320	905703	1.480
906RX	Ring "Twigs"	0,13 ct	309503	2.470	910203	2.630

P E R B O R U P

Model	Name	Carat	EURO 14K			
			Item #	14K	Item #	14K white
907R	Ring "Twigs"	0 ct	306703	1.720	907503	1.940
907RX	Ring "Twigs"	0,15 ct	311803	3.050	912603	3.270
907RXM	Ring "Twigs" with 5 Moonstone	0,15 ct	313003	3.360	913803	3.580
907RXT	Ring "Twigs" with 5 tourmalines	0,15 ct	314003	3.630	914903	3.850
907RY	Ring "Twigs"	0,68 ct	324103	6.250	924903	6.460
908R	Ring "Twigs"	0 ct	304703	1.200	905203	1.330
908RX	Ring "Twigs"	0,03 ct	305703	1.460	906203	1.600
908RXM	Ring "Twigs" with 1 Moonstone	0,03 ct	305903	1.530	906403	1.660
908RY	Ring "Twigs"	0,14 ct	308203	2.120	908703	2.260
909R	Ring "Twigs"	0 ct	307503	1.950	908503	2.200
909RX	Ring "Twigs"	0,07 ct	309903	2.570	910903	2.820
909RY	Ring "Twigs"	0,21 ct	314703	3.810	915703	4.060
910R	Ring "Twigs"	0 ct	306703	1.720	907503	1.940
910RX	Ring "Twigs"	0,14 ct	311403	2.960	912303	3.180
910RXM	Ring "Twigs" with 1 Moonstone	0,03 ct	307903	2.050	908803	2.270
910RY	Ring "Twigs"	0,29 ct	315403	3.990	916203	4.200
910RYM	Ring "Twigs" with 1 Moonstone	0,14 ct	311703	3.020	912503	3.240
911R	Ring "Changeling Twigs"	0 ct	309403	2.430	910403	2.690
911RS	Ring "Changeling Twigs" silver inkl. 1 stenball	0 ct	302103	530	902103	530
911RSX	Ring "Changeling Twigs" silver inkl. 1 stenball	0,03 ct	303103	800	903103	800
911RX	Ring "Changeling Twigs"	0,12 ct	313103	3.400	914103	3.650
911RXM	Ring "Changeling Twigs" with 3 Moonstone	0,12 ct	313803	3.580	914803	3.840
911RY	Ring "Changeling Twigs"	0,46 ct	321203	5.500	922203	5.760
912L	clasp "Twigs"	0 ct	306903	1.770	907603	1.970
912LX	clasp "Twigs"	0,09 ct	309503	2.470	910303	2.670
912LXM	clasp "Twigs" with 2 Moonstone	0,09 ct	310003	2.590	910803	2.800
912LY	clasp "Twigs"	0,28 ct	313703	3.550	914503	3.760
913V	Pendants "Twigs"	0 ct	302903	750	903203	820
913VX	Pendants "Twigs"	0,06 ct	305003	1.280	905303	1.360
913VXM	Pendants "Twigs" with 2 Moonstone	0,06 ct	305403	1.400	905703	1.480
913VY	Pendants "Twigs"	0,25 ct	309103	2.360	909403	2.440
914V	Pendants "Twigs" small	0 ct	302403	620	902703	680
914VX	Pendants "Twigs" small	0,03 ct	303503	890	903703	950
914VXT	Pendants "Twigs" small with 1 Moonstone	0,03 ct	303903	1.000	904103	1.060
914VY	Pendants "Twigs" small	0,14 ct	306003	1.540	906203	1.600
915Ø	Earstuds "Twigs"	0 ct	304003	1.030	904303	1.110
915ØX	Earstuds "Twigs"	0,06 ct	306003	1.560	906403	1.640
915ØXM	Earstuds "Twigs" with 2 Moonstone	0,06 ct	306503	1.690	906903	1.770
915ØY	Earstuds "Twigs"	0,28 ct	311103	2.870	911403	2.950
916R	Ring "Changeling Rosie"	0 ct	310703	2.780	912003	3.100
916RX	Ring "Changeling Rosie"	0,28 ct	318003	4.660	919203	4.970
917R	Ring "Changeling Smooth"	0 ct	310403	2.680	911503	2.980
918L	clasp "Open Your Heart"	0 ct	307603	1.970	908503	2.200
919R	Ring "Changeling Spin"	0 ct	306703	1.740	907303	1.880
920V	Pendants "Changeling Twigs"	0 ct	305003	1.280	905403	1.380
920VX	Pendants "Changeling Twigs"	0,07 ct	306903	1.790	907303	1.890
921Ø	Earstuds "Violina" små	0,02 ct	303303	840	903403	880
922R	Ring "Changeling Violina"	0 ct	310503	2.710	911603	3.000
922RX	Ring "Changeling Violina"	0,04 ct	311803	3.060	913003	3.360
922RY	Ring "Changeling Violina"	0,59 ct	327603	7.160	928703	7.460
923V	Pendants "Changeling Violina"	0 ct	305603	1.450	906103	1.580
923VX	Pendants "Changeling Violina"	0,01 ct	306003	1.540	906503	1.670
924V	Pendants "Changeling Raspberry"	0 ct	305003	1.300	905503	1.410
925Ø	Earstuds "Smooth 2"	0 ct	305203	1.330	905503	1.420
926Ø	Earstuds "Smooth 3"	0 ct	308203	2.120	909003	2.330
927Ø	Earstuds "Smooth small"	0 ct	302903	730	903003	770
928Ø	Earstuds "Smooth Medium"	0 ct	303603	930	903903	1.000
929Ø	Earstuds "Smooth Big"	0 ct	304903	1.250	905303	1.370
930V	Pendants "Smooth 2"	0 ct	302403	600	902503	650
931V	Pendants "Smooth 3"	0 ct	303903	1.010	904403	1.120
932R	Ring "Smooth small"	0 ct	303203	820	903503	910
933R	Ring "Smooth Medium"	0 ct	305203	1.340	905903	1.510
934R	Ring "Smooth Big"	0 ct	306503	1.670	907403	1.900
935R	Ring "Heart"	0 ct	304503	1.160	905103	1.310
935RX	Ring "Heart"	0,08 ct	306403	1.640	906903	1.780
936ØX	Earstuds "Bliss" small	0,12 ct	306203	1.610	906403	1.660
937R	Ring "Heart" Oval	0 ct	307603	1.970	908703	2.240
937RX	Ring "Heart" Oval	0,06 ct	308103	2.100	909003	2.330
937RY	Ring "Heart" Oval	0,16 ct	311203	2.900	912003	3.120
938Ø	Earstuds "Heart"	0 ct	303803	980	904103	1.050
939R	Ring "Heart" wide bandRing	0 ct	307103	1.840	908103	2.090
939RX	Ring "Heart" wide bandRing	0,14 ct	310503	2.720	911503	2.970
940R	Ring "Heart" narrow bandRing	0 ct	304503	1.170	905103	1.310
940RX	Ring "Heart" narrow bandRing	0,12 ct	307403	1.920	908003	2.070
941ØX	Earstuds "Open Your Heart"	0,04 ct	304303	1.110	904503	1.170
942A	Bracelet "OpenYour Heart"	0,04 ct	306803	1.750	907503	1.940
942AS	Bracelet "OpenYour Heart" m/silverchain 1 Heart	0,04 ct	302903	730	903003	760

P E R B O R U P

Model	Name	Carat	EURO 14K			
			Item #	14K	Item #	14K white
942AX	Bracelet "OpenYour Heart"	0,04 ct	308703	2.260	909603	2.490
942AY	Bracelet "OpenYour Heart"	0,12 ct	310703	2.760	911503	2.990
943VX	Pendants "Open Your Heart"	0,02 ct	301903	470	901903	490
944CSX	Collier "Open Your Heart" m/silverchain	0,02 ct	302603	670	902703	690
944CX	Collier "Open Your Heart"	0,02 ct	305503	1.410	905603	1.440
945VX	Pendants "Open Your Heart"	0,08 ct	303603	920	903703	960
946RX	Ring "Open Your Heart"	0,02 ct	306803	1.750	907503	1.950
946RY	Ring "Open Your Heart"	0,06 ct	307703	2.000	908503	2.200
947R	Ring "Violina" narrow	0,03 ct	305503	1.430	906103	1.580
947RX	Ring "Violina" narrow	0,07 ct	306903	1.790	907503	1.930
948R	Ring "Vera" small	0 ct	302503	640	902703	700
948RX	Ring "Vera" small	0,07 ct	303603	930	903803	980
949R	Ring "Vera" Medium	0 ct	303303	850	903603	930
949RX	Ring "Vera"Medium	0,06 ct	304403	1.130	904703	1.210
950R	Ring "Vera" Big	0 ct	304703	1.210	905203	1.340
950RX	Ring "Vera" Big	0,07 ct	305703	1.460	906203	1.600
951R	Ring "Vera" flowers	0 ct	303803	970	904103	1.060
951RX	Ring "Vera" flowers	0,07 ct	304803	1.240	905203	1.330
952R	Ring "Vera" 5	0 ct	303703	950	904003	1.040
952RX	Ring "Vera" 5	0,07 ct	304803	1.240	905203	1.330
953R	Ring "Vera" band	0 ct	303603	920	904003	1.020
954R	Ring "Vera" 3	0 ct	304003	1.020	904403	1.130
954RX	Ring "Vera" 3	0,07 ct	305003	1.290	905403	1.400
955R	Ring "Vera" double	0 ct	308303	2.150	909303	2.410
955RX	Ring "Vera" double	0,07 ct	309303	2.410	910303	2.670
956R	Ring "Vera" 7	0 ct	305903	1.530	906703	1.720
956RX	Ring "Vera" 7	0,06 ct	307003	1.800	907703	1.990
957R	Ring "Vera" mega	0 ct	306003	1.550	906803	1.750
957RX	Ring "Vera" mega	0,07 ct	307003	1.810	907803	2.010
958Ø	Earstuds "Vera"	0 ct	305403	1.380	905703	1.460
958ØX	Earstuds "Vera"	0,08 ct	306403	1.640	906703	1.720
959Ø	Ear hooks "Vera"	0 ct	308703	2.240	909603	2.480
959ØX	Ear hooks "Vera"	0,12 ct	309903	2.550	910803	2.800
960C	Collier "Vera"	0 ct	308403	2.170	908903	2.300
960CX	Collier "Vera"	0,06 ct	309303	2.410	909803	2.540
961RS	Ring "Open Your Heart" silver	0 ct	302403	620	902503	640
961RSX	Ring "Open Your Heart" silver	0,02 ct	302703	690	902803	720
962Ø	Earstuds "Open Your Heart"	0 ct	304203	1.070	904503	1.150
962ØX	Earstuds "Open Your Heart"	0,04 ct	305103	1.320	905403	1.400
963Ø	Earrings "Heart"	0 ct	305203	1.330	905603	1.440
964AS	Bracelet "Heart" snoede Heartr	0,02 ct	303103	790	903203	830
965A	Bracelet "Star"	0,04 ct	306803	1.750	907503	1.940
965AS	Bracelet "Star" m/silverchain	0,04 ct	302703	700	902803	720
965ASX	Bracelet "Star" m/silverchain	0,04 ct	303703	950	903903	1.000
965AX	Bracelet "Star"	0,04 ct	308703	2.260	909603	2.490
965AY	Bracelet "Star"	0,12 ct	310703	2.760	911503	2.990
966VX	Pendants "Star"	0,02 ct	301903	470	901903	490
967CSX	Collier "Star" m/silverchain	0,02 ct	302803	720	902903	750
967CX	Collier "Star"	0,02 ct	304603	1.180	905003	1.300
968ØX	Earstuds "Star"	0,04 ct	304003	1.030	904203	1.080
969R	Ring "Changeling Open Your Heart" inkl. 3 gemstones	0 ct	307203	1.850	907903	2.040
969RS	Ring "Changeling Open Your Heart" inkl.1 ball	0 ct	302203	550	902203	550
969RSX	Ring "Changeling Open Your Heart" inkl. 1 ball	0,02 ct	302503	650	902503	650
970R	Ring "Happy Flower" narrow	0 ct	305103	1.320	905803	1.490
970RSX	Ring "Happy Flower" narrow silver with gold	0,02 ct	301503	390	901603	400
970RY	Ring "Happy Flower" narrow	0,14 ct	307103	1.840	907703	2.000
971Ø	Earstuds "Happy Flower" små	0 ct	303203	830	903403	880
971ØSX	Earstuds "Happy Flower" små silver m gold	0,04 ct	303003	760	903003	780
972R	Ring "Happy Flower"	0 ct	307003	1.820	908003	2.060
972RSX	Ring "Happy Flower" silver with gold	0,02 ct	301903	480	901903	490
972RY	Ring "Happy Flower"	0,12 ct	309403	2.440	910403	2.690
973R	Ring "Happy Flower" wide	0 ct	312203	3.150	913803	3.580
974Ø	Earstuds "Happy Flower" Big	0 ct	305403	1.380	905903	1.510
974ØS	Earstuds "Happy Flower" Big silver m gold	0 ct	301703	430	901803	450
975VSX	Pendants "Happy Flower" silver with gold	0,02 ct	301203	310	901303	320
976C	Collier "Happy Flower" på silverchain	0 ct	302103	530	902303	590
977R	Ring "Daphne" narrow	0 ct	304403	1.120	904903	1.260
977RX	Ring "Daphne" narrow	0,1 ct	307703	2.000	908303	2.150
978R	Ring "Daphne" bandRing	0 ct	311403	2.960	913103	3.390
979R	Ring "Daphne" dome Ring	0 ct	313403	3.470	915303	3.960
979RS	Ring "Daphne" dome Ring silver with gold	0 ct	302403	610	902503	650
979RX	Ring "Daphne" dome Ring	0,12 ct	317803	4.610	919903	5.150
979RY	Ring "Daphne" dome Ring	0,72 ct	330903	8.030	933103	8.600
980R	Ring "Changeling Daphne" inkl. 3 gemstones	0 ct	311203	2.900	912503	3.250
981ØS	Earstuds "Daphne" silver with gold (Big)	0 ct	302403	610	902503	640
982Ø	Earstuds "Daphne" (små)	0 ct	302803	720	903003	760
983R	Ring "Changeling Happy Flower" inkl. 3 gemstones	0 ct	310703	2.780	912003	3.100

P E R B O R U P

Model	Name	Carat	EURO 14K			
			Item #	14K	Item #	14K white
983RSX	Ring "Changeling Happy Flower" inkl. 1 ball	0,02 ct	302403	620	902503	630
983RY	Ring "Changeling Happy Flower" inkl. 3 gemstones	0,12 ct	313103	3.400	914403	3.730
984V	Pendants "Violina" Medium	0,02 ct	303903	1.000	904203	1.090
984VY	Pendants "Violina" Medium pavé	0,33 ct	312503	3.230	912903	3.340
985R	Ring Ella narrow	0 ct	304203	1.070	904703	1.200
986R	Ring Ella wide	0 ct	305603	1.450	906303	1.630
987Ø	Earstuds Ella	0 ct	303003	760	903103	800
988Ø	Ear hooks Ella	0,04 ct	305903	1.530	906503	1.670
989A	Bangle "Ella"	0,04 ct	318303	4.740	920403	5.280
990A	Bangle Changeling "Twigs" inkl. 3 gemstones	0 ct	312303	3.190	913703	3.540
990AX	Bangle Changeling "Twigs" inkl. 3 gemstones	0,07 ct	314103	3.660	915403	4.000
991R	Ring with TahitiPearl	0,02 ct	308303	2.140	909103	2.350
992AX	Bangle "Violina"	0,02 ct	311703	3.030	912803	3.320
993R	Ring with TahitiPearl	0,02 ct	308503	2.190	909303	2.400
993RX	Ring with TahitiPearl	0,18 ct	313703	3.550	914503	3.770
994V	Pendants Changeling "Open Your Heart"	0 ct	305103	1.310	905503	1.420
995VSX	Pendants "Open Your Heart" silver with gold	0,02 ct	301903	480	901903	490
996CS	Collier "Hearts" m silverchain	0 ct	303303	850	903703	940
997R	Ring Changeling "Daphne"	0 ct	307203	1.850	907903	2.040
998V	Pendants Changeling "Ella"	0 ct	305003	1.300	905503	1.410
999R1	Ring "Garder Ella" small	0 ct	302203	550	902403	610
999R2	Ring "Garder Ella" Big	0 ct	302203	550	902403	610
Pleasure	Ring	0,9 ct	347903	12.430	951003	13.260
1000R	Ring Changeling "Ella"	0 ct	308203	2.130	909103	2.360
1001RX	Ring Pbo allianceRing	0,1 ct	306803	1.760	907203	1.850
1002V	Pendants Changeling "Happy Flower"	0 ct	306103	1.580	906703	1.720
1002VX	Pendants Changeling "Happy Flower"	0,06 ct	307503	1.950	908103	2.100
1003RSX	Ring "Violina silver"	0,02 ct	302103	530	902203	550
1004VSX	Pendants "Violina silver"	0,02 ct	301803	450	901803	460
1004VX	Pendants "Violina"	0,02 ct	309203	2.370	910303	2.670
1005ØSX	Earstuds "Violina silver"	0,02 ct	302103	530	902103	540
1006M	Cufflinks	0 ct	319403	5.030	922203	5.750
1007ASX	Bracelet Violina	0,03 ct	307603	1.970	908103	2.090
1007AX	Bracelet Violina	0,11 ct	323503	6.110	925903	6.720
1008ØX	Earstuds "Orkidé"	0,02 ct	303203	820	903403	870
1009R	Ring "Viva" Big	0 ct	313403	3.470	915003	3.900
1010R	Ring "Viva" narrow	0 ct	305403	1.400	906003	1.550
1010RX	Ring "Viva" narrow	0,06 ct	306503	1.670	907003	1.810
1011RX	Ring "Viva"	0,03 ct	307503	1.940	908403	2.160
1012R	Ring "Viva" Knot	0 ct	308103	2.090	909103	2.360
1013RX	Ring "Viva"	0,02 ct	305203	1.350	905803	1.490
1014V	Pendants "Viva"	0 ct	302603	660	902903	730
1015V	Pendants "Viva"	0 ct	302503	640	902703	700
1015VX	Pendants "Viva"	0,03 ct	303303	840	903503	900
1016ØX	Earstuds "Viva" with chain	0,02 ct	310003	2.580	910903	2.810
1017R	Ring "Changeling Stream"	0 ct	308703	2.250	909603	2.480
1018R	Ring "Una" 4-stoneRing	0,04 ct	306703	1.720	907303	1.890
1019Ø	Earstuds "Changeling Una" inkl. 4 gemstones	0,02 ct	310503	2.720	911303	2.930
1020Ø	Earrings "Una"	0,04 ct	309703	2.520	910503	2.730
1021C	Collier "Una" m silverchain	0 ct	303203	830	903503	900
1021CG	Collier "Una" m goldchain 90 cm	0 ct	308403	2.160	909403	2.430
1022Ø	Earstuds "Una" små	0 ct	305203	1.330	905603	1.450
1023Ø	Earstuds "Una" Big	0 ct	306803	1.760	907503	1.940
1023ØX	Earstuds "Una" Big	0,4 ct	315503	4.020	916203	4.200
1024V	Pendants "Changeling Una"	0 ct	304003	1.020	904203	1.070
1025R	Ring "Una"	0 ct	305403	1.390	906003	1.550
1025RX	Ring "Una"	0,4 ct	315503	4.030	916203	4.200
1026R	Ring "Changeling Una"	0 ct	309903	2.550	911003	2.840
1026RX	Ring "Changeling Una"	0,2 ct	314503	3.760	915603	4.050
1030R	Ring "Espalier"	0 ct	309303	2.400	910503	2.710
1030RX	Ring "Espalier"	0,2 ct	314103	3.660	915303	3.970
1031L	clasp "Espalier"	0 ct	311103	2.880	912503	3.240
1032Ø	Earstuds "Espalier" Big	0 ct	313603	3.530	915103	3.920
1033Ø	Earstuds Hoops "Daphne"	0 ct	310503	2.720	911703	3.040
1034R	Ring "Changeling Cocktail Twigs"	0 ct	307103	1.830	907703	2.000
1034RX	Ring "Changeling Cocktail Twigs"	0,06 ct	308503	2.210	909203	2.370
1035ØX	Earstuds "Twigs PearlEarstuds"	0,06 ct	306003	1.560	906203	1.600
1035ØXM	Earstuds "Twigs with Moonstone"	0,06 ct	306003	1.560	906203	1.600
1035ØXT	Earstuds "Twigs with tourmalines"	0,06 ct	306303	1.620	906403	1.660
1035ØY	Earstuds "Twigs with diamonds"	0,36 ct	313303	3.450	913503	3.490
1036Ø	Earstuds Hoops "Violina"	0 ct	310203	2.640	911403	2.940
1037R	Ring "Espalier" Big	0 ct	308503	2.210	909703	2.500
1038R	Ring "Espalier" Big flat	0 ct	305503	1.420	906103	1.580
1039R	Ring "Espalier" small flat	0 ct	303903	990	904203	1.090
1040R	Ring "Espalier" small	0 ct	305603	1.440	906203	1.610
1041Ø	Hoops Espalier	0 ct	308503	2.190	909403	2.420
1042Ø	Hoops Una Big	0 ct	311503	2.970	912903	3.340

P E R B O R U P

Model	Name	Carat	EURO 14K			
			Item #	14K	Item #	14K white
1043R	Ring "Diamond Dots"	0,01 ct	306003	1.550	906703	1.730
1043RX	Ring "Diamond Dots"	0,04 ct	306703	1.720	907303	1.890
1043RY	Ring "Diamond Dots"	0,05 ct	307203	1.860	907903	2.030
1043YY	Ring "Diamond Dots"	0,34 ct	313803	3.570	914503	3.750
1044R	Ring "Diamond Dots" 3	0,03 ct	309103	2.350	910203	2.630
1045Ø	Earstuds lange "Diamond Dots"	0,02 ct	308003	2.060	908703	2.260
1046Ø	Earstuds "Diamond Dots"	0,02 ct	306403	1.640	906903	1.770
1046ØYY	Earstuds "Diamond Dots"	0,36 ct	317203	4.450	917703	4.580
1047R	Ring Fiona	0 ct	309803	2.540	911203	2.890
1047RY	Ring Fiona	0,23 ct	316203	4.210	917603	4.560
1048R	Ring Fiona	0 ct	307703	1.990	908703	2.260
1048RX	Ring Fiona	0,15 ct	310603	2.740	911603	3.010
1049R	Ring Fiona	0 ct	308503	2.190	909603	2.480
1049RX	Ring Fiona	0,1 ct	311303	2.930	912403	3.220
1050R	Ring "Changeling" Fiona	0 ct	311203	2.900	912503	3.250
1050RY	Ring "Changeling" Fiona	0,32 ct	321003	5.440	922303	5.790
1051V	Pendants Changeling "Fiona"	0 ct	306103	1.580	906703	1.720
1051VX	Pendants Changeling "Fiona"	0,04 ct	307103	1.830	907703	1.980
1052ØX	Earstuds "Fiona"	0,04 ct	305603	1.450	906003	1.550
1053Ø	ØreHoops "Fiona"	0 ct	310503	2.730	911803	3.060
1054RX	Ring "Twigs" with Pearl	0,03 ct	304703	1.200	905003	1.300
1054RXM	Ring "Twigs" with Moonstone	0,03 ct	304703	1.200	905003	1.300
1054RXT	Ring "Twigs" with tourmaline	0,03 ct	304703	1.210	905103	1.310
1054RY	Ring "Twigs" with diamonds	0,18 ct	308203	2.110	908603	2.220
1055Ø	Earstuds Party Twigs	0 ct	306403	1.660	907003	1.820
1055ØX	Earstuds Party Twigs	0,18 ct	312903	3.350	913503	3.500
1055ØXM	Earstuds Party Twigs with Moonstone	0,18 ct	315103	3.920	915703	4.080
1055ØY	Earstuds Party Twigs with diamonds	1,08 ct	336403	9.440	937003	9.600
1056V	Drops for Party Twigs & Party Fiona	0 ct	302603	660	902703	700
1057RX	Ring Fiona	0,02 ct	304503	1.160	905003	1.290
1058V	Pendants Fiona	0 ct	304703	1.220	905303	1.370
1058VX	Pendants Fiona	0,06 ct	306903	1.770	907503	1.940
1059Ø	Earrings "Fiona"	0 ct	308903	2.290	909603	2.480
1060ØX	Earstuds Party Fiona	0,06 ct	308603	2.230	909303	2.410
1061RX	Ring "Twigs" with Pearl eller tahiti	0,03 ct	305703	1.460	906103	1.580
1062ØX	Earrings "Twigs" with Pearl eller tahiti	0,06 ct	308203	2.110	908603	2.220
1063Ø	Earstuds "Sonar" double	0 ct	306903	1.790	907703	1.980
1064Ø	Earstuds "Sonar" small	0 ct	303803	980	904103	1.050
1064ØX	Earstuds "Sonar" small	0,1 ct	306903	1.790	907203	1.850
1065R	Ring "Sonar"	0 ct	306203	1.590	906903	1.790
1065RX	Ring "Sonar" 2 colored	0,09 ct	310903	2.810	911803	3.050
1066R	Ring "Sonar"	0 ct	305703	1.480	906403	1.660
1067R	Ring "Sonar"	0 ct	306203	1.590	906903	1.790
1068R	Ring "Sonar"	0 ct	305103	1.320	905703	1.480
1069R	Ring "Sonar"	0 ct	304603	1.180	905103	1.310
1070M	Cufflinks "Sonar Changeling"	0 ct	309903	2.560	910803	2.790
1071V	Pendants "Sonar"	0 ct	303603	930	904003	1.020
1072RS	Ring Changeling silver	0 ct	301403	360	901403	360
1073VX	Pendants Philippa	0,06 ct	305103	1.310	905403	1.390
1074RX	Ring double Philippa	0,06 ct	306603	1.710	907203	1.850
1075R	Ring small Philippa	0 ct	303203	830	903503	900
1076R	Ring Big single Philippa	0 ct	303803	980	904203	1.080
1076RY	Ring Philippa Big single pavé	0,19 ct	313103	3.390	913503	3.510
1077RX	Ring Changeling Philippa	0,06 ct	310903	2.820	911903	3.070
1078R	Ring små butterflies Philippa	0 ct	303403	860	903703	950
1079Ø	Earstuds små Philippa	0 ct	303303	840	903403	870
1080ØX	Earstuds Philippa	0,12 ct	308703	2.240	909003	2.330
1081Ø	Earstuds Party Philippa	0 ct	306903	1.770	907503	1.930
1083V	Pendants Hearts	0 ct	304603	1.180	905103	1.310
1084R	Ring small Una	0 ct	304703	1.200	905203	1.330
1085Ø	Earstuds Party Violina	0,02 ct	308603	2.220	909403	2.420
1086R	Ring Sonar	0,03 ct	306203	1.590	906803	1.760
1087R	Ring Sonar	0,04 ct	305003	1.290	905403	1.400
1088R	Ring Violina Changeling	0 ct	309903	2.570	911003	2.850
1089ØX	Earstuds Violina with 35 mm dråbe	0,04 ct	306203	1.590	906403	1.660
1090VX	Pendants Violina with 35 mm dråbe	0,02 ct	302903	730	903003	780
1091Ø	Earstuds Violina with 20 mm dråbe	0,04 ct	306903	1.790	907303	1.890
1092V	Pendants Violina with 20 mm dråbe	0,02 ct	303403	860	903603	920
1093R	Ring Lily Lumina	0 ct	306603	1.700	907403	1.910
1094R	Ring Lily Lumina	0 ct	309003	2.330	910203	2.630
1095RX	Ring Lily Lumina	0,06 ct	309303	2.400	910303	2.660
1096Ø	Earstuds Lily Lumina	0 ct	304303	1.100	904503	1.170
1097Ø	Earstuds Lily Lumina	0 ct	306003	1.540	906503	1.680
1098V	Pendants Lily Lumina	0 ct	306003	1.560	906703	1.720
1099R	Ring Lily Lumina	0 ct	309803	2.540	911003	2.860
1100V	Pendants Lily Lumina	0 ct	304103	1.060	904403	1.140
1101VX	Pendants "Twigs" with Pearl eller tahiti	0,03 ct	303903	990	904003	1.030

P E R B O R U P

Model	Name	Carat	EURO 14K			
			Item #	14K	Item #	14K white
1102A	Bangle "Daphne"	0 ct	311103	2.870	912203	3.160
1103Ø	Earstuds "Daphne"	0 ct	304503	1.160	904903	1.250
1104R	Ring "Lily Lumina" small	0 ct	304603	1.180	905103	1.310
1105R	Ring "Lily Lumina" mega	0 ct	315603	4.050	917703	4.600
1106Ø	Earstuds "Hearts"	0 ct	303603	920	903803	970
1107V	Pendants "Hearts"	0 ct	302703	680	902903	740
1108ASX	Bracelet "Violina" w/silverchain 1 minicharm	0,01 ct	302503	630	902603	660
1108AX	Bracelet "Violina" w/goldchain 1 minicharm	0,01 ct	305903	1.520	906603	1.700
1108AY	Bracelet "Violina" w/goldchain 3 minicharm	0,03 ct	308503	2.210	909403	2.440
1109R	Ring 'Open Your Heart' with 3 Heartr	0 ct	306203	1.590	906903	1.790
1110RX	Ring 'Twigs' with extra branch	0,08 ct	307603	1.970	908303	2.150
1110RXM	Ring 'Twigs' with extra branch and Moonstone	0,08 ct	308003	2.080	908703	2.260
1110RXT	Ring 'Twigs' with ekstra gren and tourmaline	0,08 ct	308003	2.080	908703	2.260
1110RY	Ring 'Twigs' with ekstra gren	0,23 ct	311603	3.000	912303	3.180
1111RXM	Ring 'Twigs' medium with Moonstone	0,06 ct	306403	1.640	906903	1.770
1111RXT	Ring 'Twigs' medium with tourmaline	0,06 ct	306403	1.640	906903	1.770
1112N	Lapel needle pin 'Sandell'	0 ct	303503	900	903803	980
1113M	Cufflinks 'Sandell'	0 ct	313703	3.550	915603	4.040
1114R	Ring 'Duke' small	0 ct	305703	1.480	906403	1.650
1115N	Lapel needle pin 'Duke'	0 ct	305303	1.370	905903	1.510
1116M	Cufflinks 'Duke'	0 ct	313403	3.480	915303	3.960
1117RX	Ring 'Ophelia' Changeling	0,06 ct	308203	2.110	908903	2.290
1118VX	Pendant "Ophelia" Changeling	0,03 ct	306003	1.540	906403	1.660
1119VX	Pendant "Ophelia"	0,02 ct	302703	680	902803	720
1120ØX	Hoops "Ophelia"	0,06 ct	307303	1.880	907903	2.040
1121V	Drops "Ophelia"	0 ct	302403	610	902503	640
1122ØX	Earstuds "Ophelia"	0,02 ct	305003	1.290	905403	1.380
1123CX	Necklace "Ophelia" with gold chain	0,01 ct	305403	1.380	905503	1.410
1123CSX	Necklace "Ophelia" with silver chain	0,01 ct	302303	590	902403	620
1124AY	Bracelet "Ophelia" gold w/3 charms	0,03 ct	308303	2.140	908503	2.200
1124AX	Bracelet "Ophelia" gold with 1 charm	0,01 ct	306203	1.610	906403	1.640
1124ASX	Bracelet "Ophelia" silver with 1 charm	0,01 ct	302403	620	902503	650
1125CS	Collier 'Philippa' with silverchain	0 ct	302103	530	902203	560
1126ØX	Hoops 'Ophelia' big	0,1 ct	310203	2.650	911203	2.900
1127ØX	Hoops 'Ophelia' reversible	0,06 ct	307903	2.030	908503	2.200
1128RX	Ring 'Ophelia'	0,08 ct	305903	1.520	906403	1.660
1129RX	Ring 'Ophelia' big	0,03 ct	306903	1.780	907603	1.970
1130R	Ring 'Ophelia' small	0 ct	304703	1.200	905103	1.320
1131L	Clasp - simple	0 ct	302803	720	903103	800
1132L	Clasp - cracked 11 mm	0 ct	304803	1.230	905403	1.380
1133C	Collier 'Chunky' 45 cm	0,01 ct	358203	15.120	964803	16.840
1134CX	Collier 'Violina' with mini charm and gold necklace	0,01 ct	305603	1.450	905703	1.480
1134CSX	Collier 'Violina' with mini charm and silver necklace	0,01 ct	302603	660	902703	690
1136ØX	Earrings 'Kaya' small	0,02 ct	304103	1.060	904303	1.110
1137ØX	Earrings 'Kaya' large for pendants	0,02 ct	308503	2.190	909303	2.400
1138VX	Pendant 'Kaya' small	0,01 ct	302403	610	902503	650
1139RX	Ring 'Kaya' small	0,01 ct	306203	1.590	906803	1.760
1139RY	Ring 'Kaya' small with pavé	0,17 ct	308603	2.220	909103	2.360
1140RX	Ring 'Kaya' large	0,05 ct	309803	2.530	910903	2.810
1140RY	Ring 'Kaya' large with pavé	0,33 ct	314803	3.840	915703	4.070
1141R	Ring 'Daphne' medium wide	0 ct	309103	2.360	910303	2.670
1141RX	Ring 'Daphne' medium wide	0,13 ct	311903	3.070	913103	3.390
1142V	Pendant 'Daphne' Changeling	0 ct	304703	1.200	905003	1.290
1143RX	Ring 'Kaya' mini	0,01 ct	303903	1.000	904303	1.100
1144RX	Ring 'Kaya' w. big fan	0,01 ct	305003	1.280	905503	1.410
1145RX	Ring 'Kaya' Changeling	0,01 ct	310103	2.620	911203	2.890
1146VX	Pendant 'Kaya' big	0,01 ct	304303	1.110	904703	1.220
1147AX	Bangle 'Kaya'	0,05 ct	316703	4.320	918503	4.790
1148CSX	Collier 'Trio'	0,01 ct	302903	730	903003	770
1148CX45	Collier 'Trio'	0,01 ct	305903	1.510	906003	1.550
1148CX90	Collier 'Trio'	0,01 ct	308903	2.300	909003	2.340
1149AX	Bracelet 'Trio'	0,01 ct	304103	1.060	904303	1.110
1149ASX	Bracelet 'Trio'	0,01 ct	302903	730	903003	770
1150RX	Dôme de Perles - small	0,08 ct	314103	3.650	915203	3.930
1151AX	Bracelet 'Classic Tennis'	3,63 ct	457203	40.870	1063703	42.540
1152ØX	The Lucky Ones	0,08 ct	305203	1.340	905303	1.360
1153ØX	Ear hooks 'Ophelia'	0,02 ct	303403	870	903603	930
1154V	Drop pendants - 1 pair	0 ct	302203	550	902203	570
1155VX	Pendant 'Ophelia'	0,03 ct	303503	910	903803	980
1156V	Pendant 'Una'	0 ct	303503	910	903903	1.010
1157Ø	Hoops 'Kaya' small	0 ct	307803	2.010	908603	2.220
1158Ø	Hoops 'Kaya' big	0 ct	309703	2.510	910803	2.790
1159ØY	Earstud Violina - 'He loves me' 1 pcs.	0,37 ct	317803	4.610	918403	4.770
1160R	Ring 'Linn'	0 ct	304903	1.270	905503	1.420
1161R	Ring 'Linn' - small	0 ct	304603	1.190	905203	1.330
1162Ø	Hoops 'Linn'	0 ct	307703	1.990	908503	2.200

P E R B O R U P

Model	Name	Carat	EURO 14K			
			Item #	14K	Item #	14K white
1163Ø	Earstuds 'Linn'	0 ct	305303	1.360	905703	1.470
1164V	Pendant 'Linn' - small	0 ct	301903	470	902003	500
1165V	Pendant 'Linn' - large	0 ct	304003	1.020	904403	1.140
1166R	Ring 'Klint' - small	0 ct	306003	1.540	906703	1.740
1167R	Ring 'Klint' - large	0 ct	311903	3.080	913503	3.510

P E R B O R U P

Model	Name	Carat	EURO silver	
			Item #	14K
SO11Ø	Hoops 'Kaya' small	0 ct	300903	220
SO12Ø	Hoops 'Kaya' big	0 ct	301003	260
SO13R	Ring 'Kaya'	0 ct	300903	220
SO14VX	Pendant 'Kaya'	0,01 ct	301103	270
SO15ØX	Hoops 'Ophelia' small	0,02 ct	301403	340
SO16ØX	Hoops 'Ophelia' big	0,04 ct	301503	380
SO17VX	Pendant 'Kaya'	0,01 ct	301103	270
SO18Ø	Earrings 'Una'	0 ct	300903	220
SO19V	Pendant 'Una'	0 ct	300703	180